

LEGEND

SYMBOL	DESCRIPTION	SYMBOL	DESCRIPTION
	A-1,3,5 ADJACENT TO ARROW INDICATES HOME-RUN OF CIRCUITS 1,3,5 TO PANEL A. 3,5 OR A-3,5 ADJACENT TO ARROW INDICATES CIRCUIT CONTINUATION. MARKS ACROSS RACEWAY RUNS INDICATE THE NUMBER OF NO.12 CONDUCTORS, UNLESS NOTED, NO MARKS INDICATES TWO NO.12 CONDUCTORS. EQUIPMENT GROUNDING CONDUCTORS ARE NOT SHOWN, SEE GENERAL NOTES. IF INDICATED ADJACENT TO OUTLET, NUMERAL AND LOWER CASE LETTER INDICATES CIRCUIT CONNECTION AND SWITCH/LEG DESIGNATION RESPECTIVELY. TYPE B OR CAPITAL LETTER B INDICATES LIGHT FIXTURE TYPE. UNLESS NOTED, DIMENSIONS INDICATED IN LEGEND AND ON PLANS ARE TO BOTTOM OF OUTLET OR DEVICE. ALL SYMBOLS INDICATED HEREIN MAY NOT NECESSARILY BE USED ON THE PLANS.		ELECTRIC DUCT HEATER
	CEILING OUTLET AND FLUORESCENT FIXTURE		ELECTRIC WALL HEATER
	CEILING OUTLET AND FLUORESCENT FIXTURE - EGRESS/EMERGENCY LIGHTING - NOTE G56		MOTOR, HORSEPOWER AS INDICATED
	CEILING OUTLET AND FLUORESCENT FIXTURE - CENTER LAMP(S) ON EGRESS/EMERGENCY CIRCUIT - NOTE G56		NON-FUSIBLE DISCONNECT SWITCH, RATING/POLES/ENCLOSURE AS INDICATED
	OUTLET AND FLUORESCENT STRIP FIXTURE - MOUNTING AS INDICATED IN FIXTURE SCHEDULE		FUSIBLE DISCONNECT SWITCH, RATING/POLES/ENCLOSURE, FUSES AS INDICATED
	CEILING OR WALL OUTLET AND FIXTURE		MAGNETIC STARTER
	CEILING OR WALL OUTLET AND FIXTURE - EGRESS/EMERGENCY LIGHTING - NOTE G56		COMBINATION MAGNETIC STARTER/NON-FUSIBLE DISCONNECT SWITCH
	OUTLET AND EXIT LIGHT - LETTERS INDICATE FIXTURE TYPE. PROVIDE ARROWS INDICATED - NOTE G56		COMBINATION MAGNETIC STARTER/FUSED DISCONNECT SWITCH
	CEILING OR WALL MOUNTED JUNCTION BOX		RACEWAY INSTALLED CONCEALED IN WALLS AND/OR ABOVE CEILING
	FLOOR JUNCTION BOX		RACEWAY INSTALLED CONCEALED IN/OR BELOW FLOOR SLAB OR BELOW GRADE
	20 AMP DUPLEX RECEPTACLE- MT. 16" AFF		RACEWAY INSTALLED EXPOSED
	20 AMP DUPLEX RECEPTACLE- MT. 48" AFF AND/OR ABOVE COUNTER TOP		RACEWAY FOR FIRE ALARM SYSTEM
	20 AMP WEATHERPROOF DUPLEX RECEPTACLE, MT. 16" ABOVE FLOOR AND 36" ABOVE EARTH, NOTE G31.		RACEWAY FOR INTERCOMMUNICATION/PROGRAM SYSTEM
	SPECIAL PURPOSE RECEPTACLE.		SLEEVE, PROVIDE SLEEVES THROUGH WALLS AND FLOORS WHERE NEEDED AND AS INDICATED ON DRAWINGS. 2" MIN. FOR CABLING, SEAL OR FIRESTOP ALL SLEEVES, NUMERICAL NUMBER ADJACENT TO SLEEVE INDICATES QUANTITY. SIZE SLEEVES FOR CABLING REQUIRED (UNO).
	20 AMP GROUND FAULT INTERRUPTER DUPLEX RECEPTACLE- MT. 48" AFF AND/OR ABOVE COUNTER TOP OR AS INDICATED, NOTE G26.		FLEXIBLE METALLIC RACEWAY, 18" MAX LENGTH.
	20 AMP DOUBLE DUPLEX RECEPTACLE WITH ISOLATED GROUND - MT. 16" AFF, NOTE G42.		CONDUIT STUB-UP AND HOMERUN
	20 AMP DOUBLE DUPLEX RECEPTACLE- MT. 16" AFF		CONDUIT UP/CONDUIT DOWN
	20 AMP DUPLEX RECEPTACLE WITH ISOLATED GROUND- MT. 16" AFF, NOTE G42.		CONDUIT TERMINATION, STUB-OUT
	FLOOR OUTLET WITH TWO 20AMP DUPLEX RECEPTACLES, NOTE G55.		GROUND
	FLOOR OUTLET WITH 20AMP DUPLEX RECEPTACLE, NOTE G55.		
	20 AMP DUPLEX RECEPTACLE WITH ISOLATED GROUND, FLOOR MTD. TOP OF DEVICE FLUSH WITH FINISHED FLOOR, NOTE G42 & G55.		
	20 AMP DUPLEX RECEPTACLE- MOUNT FLUSH WITH CEILING		
	ELECTRIC DRINKING FOUNTAIN RECEPTACLE - NOTE G3.		FIRE ALARM CONTROL PANEL
	TELECOMMUNICATIONS OUTLET- MT. 16" AFF U.N.O. EXTEND 1" TO COMMUNICATIONS BACKBOARD/EQUIPMENT RACK/CABINET, NOTE G50.		FIRE ALARM REMOTE ANNUCIATOR
	FIRE ALARM CONTROL PANEL OUTLET, CONTAINS (2) CAT 6 CABLE IN 1" C HOMERUN AND TERMINATED AT COMMUNICATIONS BACKBOARD/EQUIPMENT RACK/CABINET FOR DACT.		SPRINKLER SYSTEM FIRE ALARM WATER FLOW SWITCH
	INTRUSION DETECTION CONTROL PANEL OUTLET, CONTAINS (1) CAT 6 CABLE IN 1" C HOMERUN AND TERMINATED AT COMMUNICATIONS BACKBOARD/EQUIPMENT RACK/CABINET.		SPRINKLER SYSTEM SUPERVISORY VALVE FIRE ALARM TAMPER SWITCH
	HVAC CONTROL PANEL OUTLET, CONTAINS 1" C/W (1) CAT 6 CABLE. COORDINATE WITH MECHANICAL FOR TERMINATION OF CABLE AT HVAC PANEL.		FIRE ALARM MANUAL PULL STATION - MT. 48" UP TO TOP.
	TELEVISION OUTLET, MT. 16" AFF UNO, EXTEND 1" TO COMMUNICATIONS BACKBOARD/EQUIPMENT RACK/CABINET, NOTE G50.		FIRE ALARM AUDIBLE AND VISUAL SIGNAL DEVICE- WALL MOUNTED, CD = CANDELA RATING.
	PROJECTOR OUTLET, CEILING MOUNTED "W" INDICATES WALL MOUNT, LOCATE CEILING MOUNTS 4" FROM WALL WITH PROJECTION BOARD.		HIGH AMBIENT LEVEL HORN FIRE ALARM - WALL MOUNTED 10'-0" A.F.F.
	WIRELESS ACCESS POINT OUTLET, CEILING MTD, EXTEND 1" TO COMMUNICATIONS BACKBOARD/EQUIPMENT RACK/CABINET. "W" INDICATES WALL MOUNT.		FIRE ALARM VISUAL SIGNAL - WALL MOUNTED, CD = CANDELA RATING.
	PROVIDE THREE GANG OUTLET BOX AT 4" AFF WITH (1) - 1/2" C. TO PROJECTOR FOR ON/OFF PROJECTOR SWITCH/HDMI/VGA PROVIDE JUNCTION BOX AT THE PROJECTOR (1).		FIRE ALARM VISUAL SIGNAL - CEILING MOUNTED, CD = CANDELA RATING.
	INTERCOMMUNICATIONS ADMINISTRATION PHONE CONSOLE DESK MOUNTED, REQUIRES (1) DATA DROP FOR IP MODULE.		FIRE ALARM AUDIBLE AND VISUAL SIGNAL DEVICE - WALL MOUNTED.
	HIGH SECURITY INTERCOM STATION, MT 48" AFF, REQUIRES (1) DATA DROP FOR IP MODULE.		FIRE ALARM VOICE EVAC SPEAKER AND VISUAL SIGNAL DEVICE - WALL MOUNTED, CD = CANDELA RATING.
	CEILING MOUNTED PAGING SPEAKER.		FIRE ALARM VOICE EVAC SPEAKER - WALL MOUNTED.
	CEILING MOUNTED INTERCOM SPEAKER, W-INDICATES WALL MOUNTED OTHERWISE.		FIRE ALARM VOICE EVAC SPEAKER - CEILING MOUNTED.
	WALL MOUNTED PAGING SPEAKER, MT. 7'6" AFF TO TOP.		FIRE ALARM SYSTEM CONTROL RELAY
	LOCAL SPEAKER VOLUME CONTROL OVERRIDE, MT. 48" AFF, REQUIRES (1) DATA DROP FOR IP MODULE.		FIRE ALARM DIGITAL ALARM COMMUNICATOR TRANSMITTER
	INTERCOMMUNICATIONS CALL BUTTON, MT. 48" AFF, REQUIRES (1) DATA DROP FOR IP MODULE.		FIRE ALARM REMOTE VOICE EVACUATION MICROPHONE
	ACCESS CONTROL PANEL PROVIDED BY DOOR HARDWARE CONTRACTOR (DHC).		THERMAL DETECTOR, CEILING MOUNTED
	ACCESS CONTROL KEYPAD PROVIDED BY DOOR HARDWARE CONTRACTOR, MT. 48" AFF.		SMOKE DETECTOR, CEILING MOUNTED
	CARD READER PROVIDED BY DOOR HARDWARE CONTRACTOR, PROVIDE AND INSTALL 16C/20AWG CABLE IN 1/4" C. TO NEAREST ACCESS CONTROL PANEL, LEAVE SLACK FOR DHC.		AIR DUCT SMOKE DETECTOR
	INTRUSION DETECTION PANEL.		SMOKE DAMPER
	INTRUSION DETECTION KEYPAD, MT. 48" AFF, PROVIDE AND INSTALL KEYPAD WITH MANUFACTURE RECOMMENDED CABLING FROM INTRUSION DETECTION PANEL.		SMOKE DETECTOR REMOTE STATUS DISPLAY AND TEST SWITCH
	DOOR CONTACT, 2-CONTACTS PER DOOR, ONE CONTACT IS FOR ACCESS CONTROL AND ONE CONTACT IS FOR INTRUSION DETECTION, PROVIDE AND INSTALL DOOR CONTACTS WITH MANUFACTURE RECOMMENDED CABLING FROM EACH CONTACT TO ITS ASSOCIATED CONTROL PANELS.		MAGNETIC DOOR HOLDER, WALL MOUNTED
	MOTION DETECTOR, PROVIDE AND INSTALL MOTION DETECTORS WITH MANUFACTURE RECOMMENDED CABLING FROM INTRUSION DETECTION PANEL. W-INDICATES WALL MOUNTED		MAGNETIC DOOR HOLDER, FLOOR MOUNTED
	IP CAMERA (12MM LENS), PROVIDE AND INSTALL CAMERA AND (2) CATEGORY 6 CABLE, JACK, BOX, AND FACEPLATE, TERMINATE ON IP CAMERA PATCH PANEL IN COMMUNICATIONS ROOM, SUBSCRIPT C - INDICATES CEILING MOUNTED & W - INDICATES WALL MOUNTED, NOTE G50.		ELECTRIC OPERATED GAS SOLENOID VALVE
	IP CAMERA (6MM LENS), PROVIDE AND INSTALL CAMERA AND (2) CATEGORY 6 CABLE, JACK, BOX, AND FACEPLATE, TERMINATE ON IP CAMERA PATCH PANEL IN COMMUNICATIONS ROOM, NOTE G50.		PANELBOARD, FLUSH MOUNTED
	IP CAMERA (EXTERIOR), PROVIDE AND INSTALL CAMERA AND (2) CATEGORY 6 CABLE, JACK, BOX, AND FACEPLATE, TERMINATE ON IP CAMERA PATCH PANEL IN COMMUNICATIONS ROOM, NOTE G50.		PANELBOARD, SURFACE MOUNTED
	4-POST FLOOR MOUNT RACK, 84"H X 24" W X 24" D, PROVIDE QUANTITY AS SHOWN ON DETAIL DRAWINGS.		4" X 8" X 3/4" PLYWOOD WITH 2 COATS OF FIRE RETARDANT PAINT ON ALL SIDES, MT. 6" AFF.
	18" LADDER RACK CABLE TRAY		DRY-TYPE TRANSFORMER - VOLTAGE, PHASE, AND KVA AS INDICATED
	18" WIRE BASKET CABLE TRAY		EQUIPMENT AS NOTED
	SINGLE POLE TOGGLE SWITCH- MT. 48" UP		
	THREE-WAY TOGGLE SWITCH- MT. 48" UP		
	FOUR-WAY TOGGLE SWITCH- MT. 48" UP		
	TOGGLE SWITCH WITH PILOT LAMP- MT. 48" UP		
	CORBIN TYPE KEY SWITCH- MT. 48" UP		
	MOTOR RATED SWITCH WITH OVERLOAD PROTECTION - MT. 48" UP.		
	MOTOR RATED DISCONNECT SWITCH, SINGLE PHASE - MT. 48" UP.		
	OCCUPANCY SENSOR SINGLE LEVEL SWITCH, WALL MTD. 48" UP, NOTE G22.		
	OCCUPANCY SENSOR MULTI LEVEL SWITCH, WALL MTD. 48" UP, NOTE G22.		
	OCCUPANCY SENSOR CEILING MOUNTED, NOTE G23.		
	OCCUPANCY SENSOR WALL MTD, MT. 8'6" UP, NOTE G24.		

ABBREVIATIONS

A OR AMP	AMPERES
AFF	ABOVE FINISHED FLOOR
AIC	AMPERE INTERRUPTING CAPACITY
AM	AMMETER
AS	AMMETER SELECTOR SWITCH
ASYM	ASYMMETRICAL
C	CONDUIT
CB	CIRCUIT BREAKER
CKT	CIRCUIT
CLF	CURRENT LIMITING FUSE
CNTL	CONTROL
CT	CURRENT TRANSFORMER
D	DEPTH
DISC	DISCONNECT SWITCH
DISC SW	DISCONNECT SWITCH
ER	EXISTING RELOCATED
ETR	EXISTING TO REMAIN
EXP	EXPLOSION PROOF
F	FUSE
FA	FIRE ALARM
FACP	FIRE ALARM CONTROL PANEL
FMPX	FIRE ALARM MULTIPLEX PANEL
G OR GND	GROUND
H	HEIGHT
HP	HORSEPOWER
JB OR J	JUNCTION BOX
KVA	KILOVOLT - AMPS
KW	KILOWATTS
L	LENGTH
LA	LIGHTNING ARRESTOR
MCB OR MB	MAIN CIRCUIT BREAKER
MH OR MTG	MOUNTING HEIGHT
MLO	MAIN LUGS ONLY
MT OR MTD	MOUNT OR MOUNTED
NEC	NATIONAL ELECTRICAL CODE
NFPA	NATIONAL FIRE PROTECTION ASSOC.
NTS	NOT TO SCALE
P	POLE
PNL	PANELBOARD
RECEPT	RECEPTACLE
RMS	ROOT MEAN SQUARE
SW	SWITCH
SWBD	SWITCHBOARD
SYM	SYMMETRICAL
TBB	TELEPHONE BACKBOARD
TYP	TYPICAL
UG	UNDERGROUND
UL	UNDERWRITERS LABORATORIES
UNO	UNLESS NOTED OTHERWISE
V	VOLTS
VM	VOLTMETER
VS	VOLTMETER SELECTOR SWITCH
W	WIDTH
W/	WITH
WHDM	WATT HOUR DEMAND METER
WM	WATTMETER
WP	WEATHER PROOF
XFMR	TRANSFORMER



28 E 33TH ST  
SAVANNAH, GA 31401  
T 912.447.5665  
F 912.447.8381  
WWW.GREENLINEARCH.COM

ESTHER F. GARRISON SCHOOL OF VISUAL AND PERFORMING ARTS  
**NEW PERFORMING ARTS CENTER**  
SAVANNAH-CHATHAM COUNTY PUBLIC SCHOOL SYSTEM  
SAVANNAH, GEORGIA

LEGEND AND ABBREVIATIONS

REVISIONS

- The drawings are the property of GREENLINE and not to be reproduced or copied in whole or in part. It is not to be used on any other project and a notice is required.
- Scale on related notes are valid on the related drawing only and are hereby changed in proportion to the difference in scale between the part and the original drawing.
- Do not scale dimensions from plans. Read and double check all dimensions shown to scale. Use dimensions given or consult the architect for further clarification.

FINAL REVIEW SET  
11/30/2015  
NOT FOR CONSTRUCTION  
JOB NO: 14.036  
ISSUE DATE: 11/30/15  
DRAWN:

E0.1

CADD PLOT  
25-NOV-2015  
10:05  
bmoje

REVISIONS

1. The drawings are the property of GREENLINE and are not to be reproduced or copied in whole or in part. It is not to be used on any other project and a license agreement is required.
2. Scales on related sheets are valid on the original drawing only and are hereby changed in proportion to the difference in scale between this sheet and the original drawing.
3. Do not scale dimensions from plans. Plans and details are not always drawn to scale. Use dimensions given or consult the architect for further clarification.

FINAL REVIEW SET  
11/30/2015  
NOT FOR CONSTRUCTION  
JOB NO: 14.036  
ISSUE DATE: 11/30/15  
DRAWN:

**E1.3**

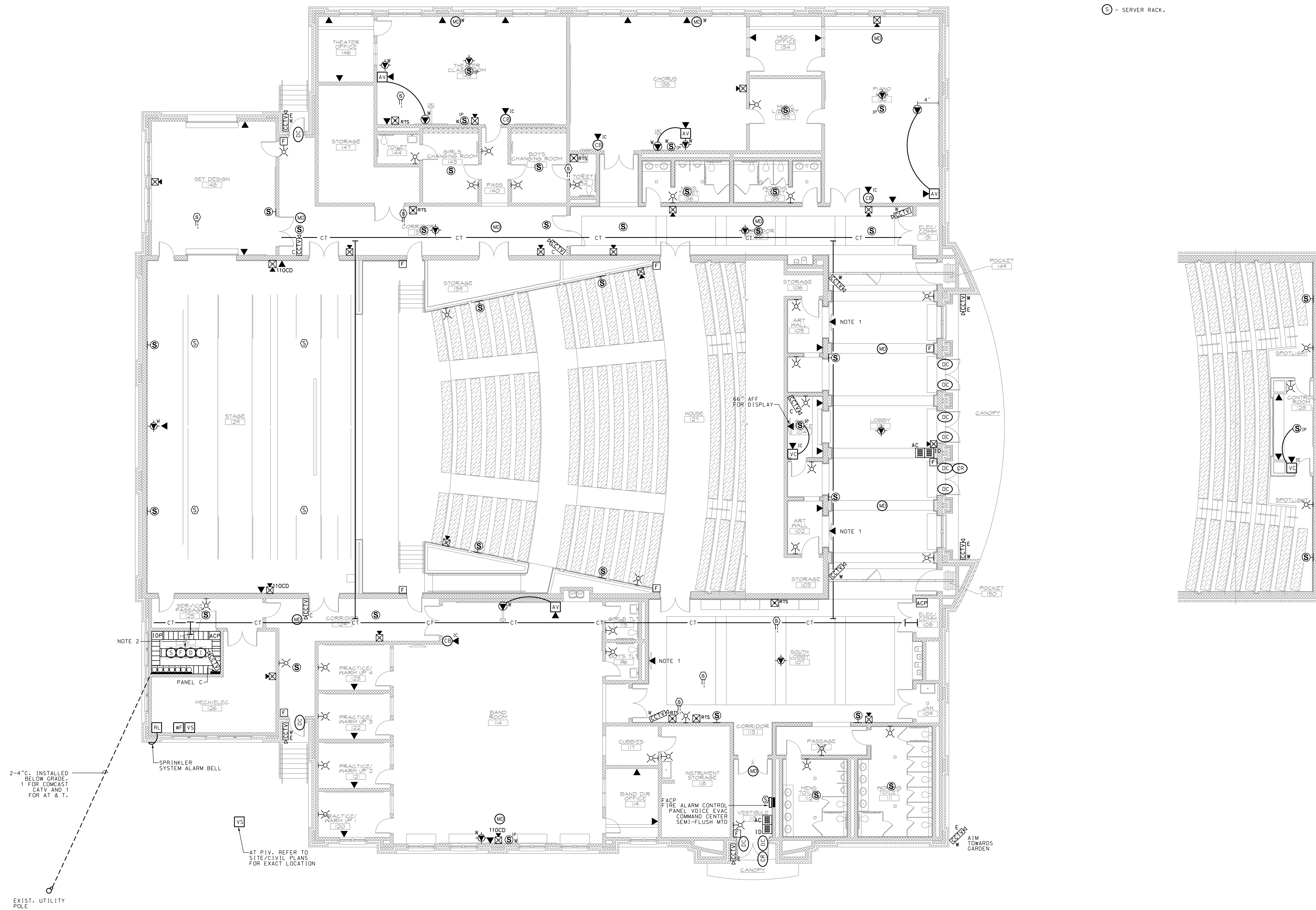
**NOTES:**

1. FOR LED/LCD DISPLAYS BY AV CONTRACTOR. REFER TO ARCHITECTURAL/AV PLANS FOR MOUNTING HEIGHTS. LOCATE DIRECTLY BEHIND DISPLAYS.

2. FRONT OF EQUIPMENT RACK.

LEGEND:

- (I) - INTERCOM/PROGRAM SYSTEM EQUIPMENT
- (D) - TERMINATE ALL COPPER DATA CABLING IN THIS RACK.
- (F) - TERMINATE ALL FIBER CABLING IN THIS RACK
- (S) - SERVER RACK.



2-4" C. INSTALLED BELOW GRADE.  
1 FOR COMCAST CATV AND 1 FOR AT & T.

EXIST. UTILITY POLE

SPRINKLER SYSTEM ALARM BELL

AT PIV. REFER TO SITE/CIVIL PLANS FOR EXACT LOCATION

NOTE 2

NOTE 1

NOTE 1

NOTE 1