

THIS DOCUMENT IS THE PROPERTY OF ROSSER INTERNATIONAL, INC. IT IS TO BE USED ONLY FOR THE PROJECT AND SITE SPECIFICALLY IDENTIFIED HEREIN. IT IS NOT TO BE REPRODUCED, COPIED, OR TRANSMITTED IN ANY FORM OR BY ANY MEANS, ELECTRONIC OR MECHANICAL, INCLUDING PHOTOCOPYING, RECORDING, OR BY ANY INFORMATION STORAGE AND RETRIEVAL SYSTEM, WITHOUT THE WRITTEN PERMISSION OF ROSSER INTERNATIONAL, INC.

CONSULTANTS

STAMP

DATE

BY

PROJECT

NO.

REVISION

DESCRIPTION

DATE

BY

PROJECT

NO.

REVISION

DESCRIPTION

DATE

BY

PROJECT

NO.

REVISION

DESCRIPTION

DATE

BY

PROJECT

NO.

REVISION

DESCRIPTION

DATE

BY

PROJECT

NO.

REVISION

DESCRIPTION

DATE

BY

PROJECT

NO.

REVISION

DESCRIPTION

DATE

BY

PROJECT

NO.

REVISION

DESCRIPTION

DATE

BY

PROJECT

NO.

REVISION

DESCRIPTION

DATE

BY

PROJECT

NO.

REVISION

DESCRIPTION

DATE

BY

PROJECT

NO.

REVISION

DESCRIPTION

DATE

BY

PROJECT

NO.

REVISION

DESCRIPTION

DATE

BY

PROJECT

NO.

REVISION

DESCRIPTION

DATE

BY

PROJECT

NO.

REVISION

DESCRIPTION

DATE

BY

PROJECT

NO.

REVISION

DESCRIPTION

DATE

BY

PROJECT

NO.

REVISION

DESCRIPTION

DATE

BY

PROJECT

NO.

REVISION

DESCRIPTION

DATE

BY

PROJECT

NO.

REVISION

DESCRIPTION

DATE

BY

PROJECT

NO.

REVISION

DESCRIPTION

DATE

BY

PROJECT

NO.

REVISION

DESCRIPTION

DATE

BY

PROJECT

NO.

REVISION

DESCRIPTION

DATE

BY

PROJECT

NO.

REVISION

DESCRIPTION

DATE

BY

PROJECT

NO.

REVISION

DESCRIPTION

DATE

BY

PROJECT

NO.

REVISION

DESCRIPTION

DATE

BY

PROJECT

NO.

REVISION

DESCRIPTION

DATE

BY

PROJECT

NO.

REVISION

DESCRIPTION

DATE

BY

PROJECT

NO.

REVISION

DESCRIPTION

DATE

BY

PROJECT

NO.

REVISION

DESCRIPTION

DATE

BY

PROJECT

NO.

REVISION

DESCRIPTION

DATE

BY

PROJECT

NO.

REVISION

DESCRIPTION

DATE

BY

PROJECT

NO.

REVISION

DESCRIPTION

DATE

BY

PROJECT

NO.

REVISION

DESCRIPTION

DATE

BY

PROJECT

NO.

REVISION

DESCRIPTION

DATE

BY

PROJECT

NO.

REVISION

DESCRIPTION

DATE

BY

PROJECT

NO.

REVISION

DESCRIPTION

DATE

BY

PROJECT

NO.

REVISION

DESCRIPTION

DATE

BY

PROJECT

NO.

REVISION

DESCRIPTION

DATE

BY

PROJECT

NO.

REVISION

DESCRIPTION

DATE

BY

PROJECT

NO.

REVISION

DESCRIPTION

DATE

BY

PROJECT

NO.

REVISION

DESCRIPTION

DATE

BY

PROJECT

NO.

REVISION

DESCRIPTION

DATE

BY

PROJECT

NO.

REVISION

DESCRIPTION

DATE

BY

PROJECT

NO.

REVISION

DESCRIPTION

DATE

BY

PROJECT

NO.

REVISION

DESCRIPTION

DATE

BY

PROJECT

NO.

REVISION

DESCRIPTION

DATE

BY

PROJECT

NO.

REVISION

DESCRIPTION

DATE

BY

PROJECT

NO.

REVISION

DESCRIPTION

DATE

BY

PROJECT

NO.

REVISION

DESCRIPTION

DATE

BY

PROJECT

NO.

REVISION

DESCRIPTION

DATE

BY

PROJECT

NO.

REVISION

DESCRIPTION

DATE

BY

PROJECT

NO.

REVISION

DESCRIPTION

DATE

BY

PROJECT

ROSSER PROJECT NUMBER 17002.23

DATE RELEASED FOR CONSTRUCTION 10-10-2018

COPYRIGHT © 2018 Rosser International, Inc.

CADD SHEET FILE NAME

SHEET TITLE

PLUMBING

LOCKERS AT GYM

DEMO &

PROPOSED

SHEET NUMBER

P1.5

SHEET XX OF XX

STEM ACADEMY (AT BARTLETT)
TOILET RENOVATION

207 EAST MONTGOMERY CROSS RD.
SAVANNAH, GA

CONSTRUCTION DOCUMENTS

CONSULTANTS

STAMP

PRINTING AND REVISIONS

MARK DATE DESCRIPTION

ROSSER PROJECT NUMBER 17002.23

DRAWN BY D. KING

CHECKED BY

DATE RELEASED FOR CONSTRUCTION 10-10-2018

COPYRIGHT © 2018 Rosser International, Inc.

CADD SHEET FILE NAME

SHEET TITLE

PLUMBING

LOCKERS AT GYM

DEMO &

PROPOSED

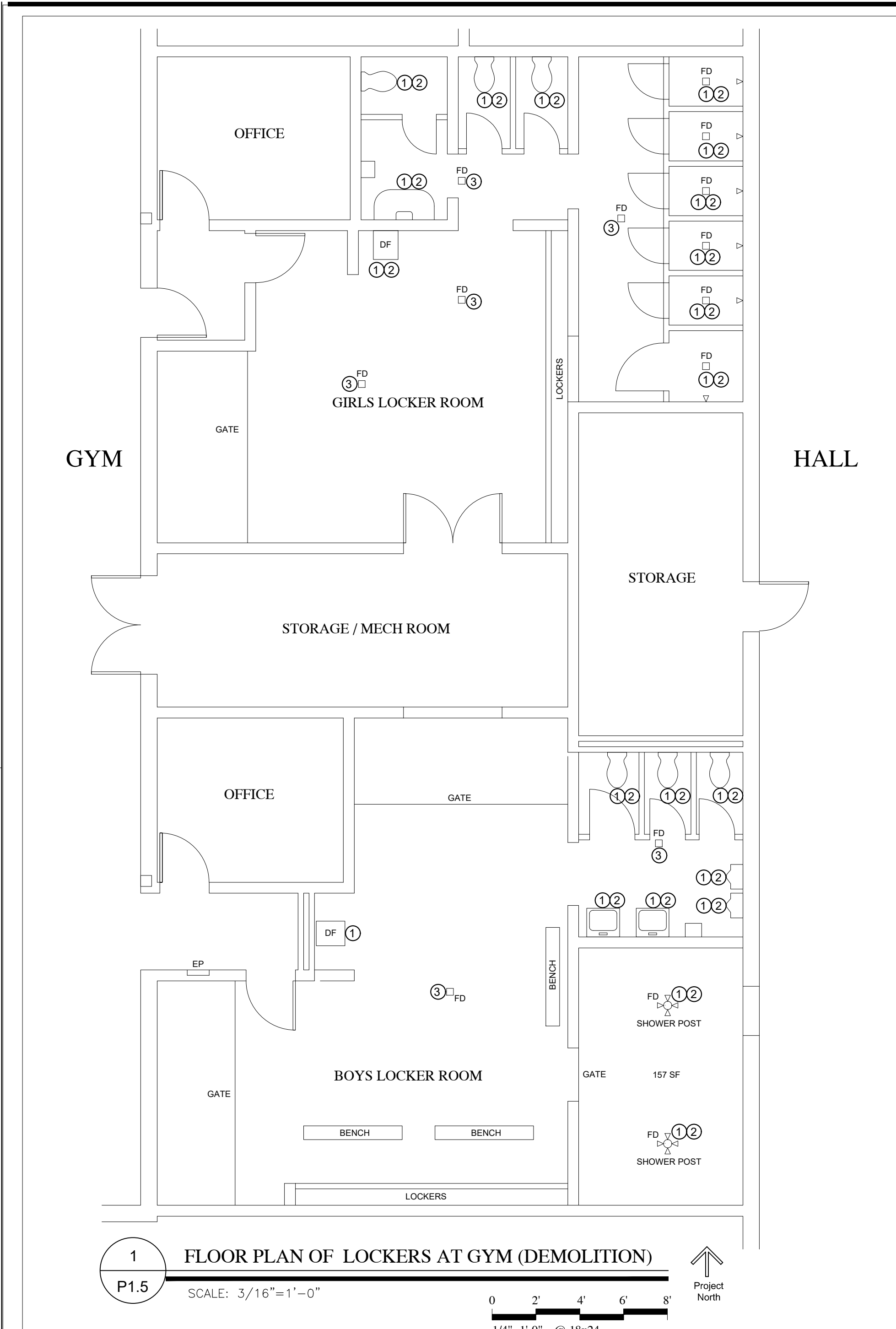
SHEET NUMBER

P1.5

SHEET XX OF XX

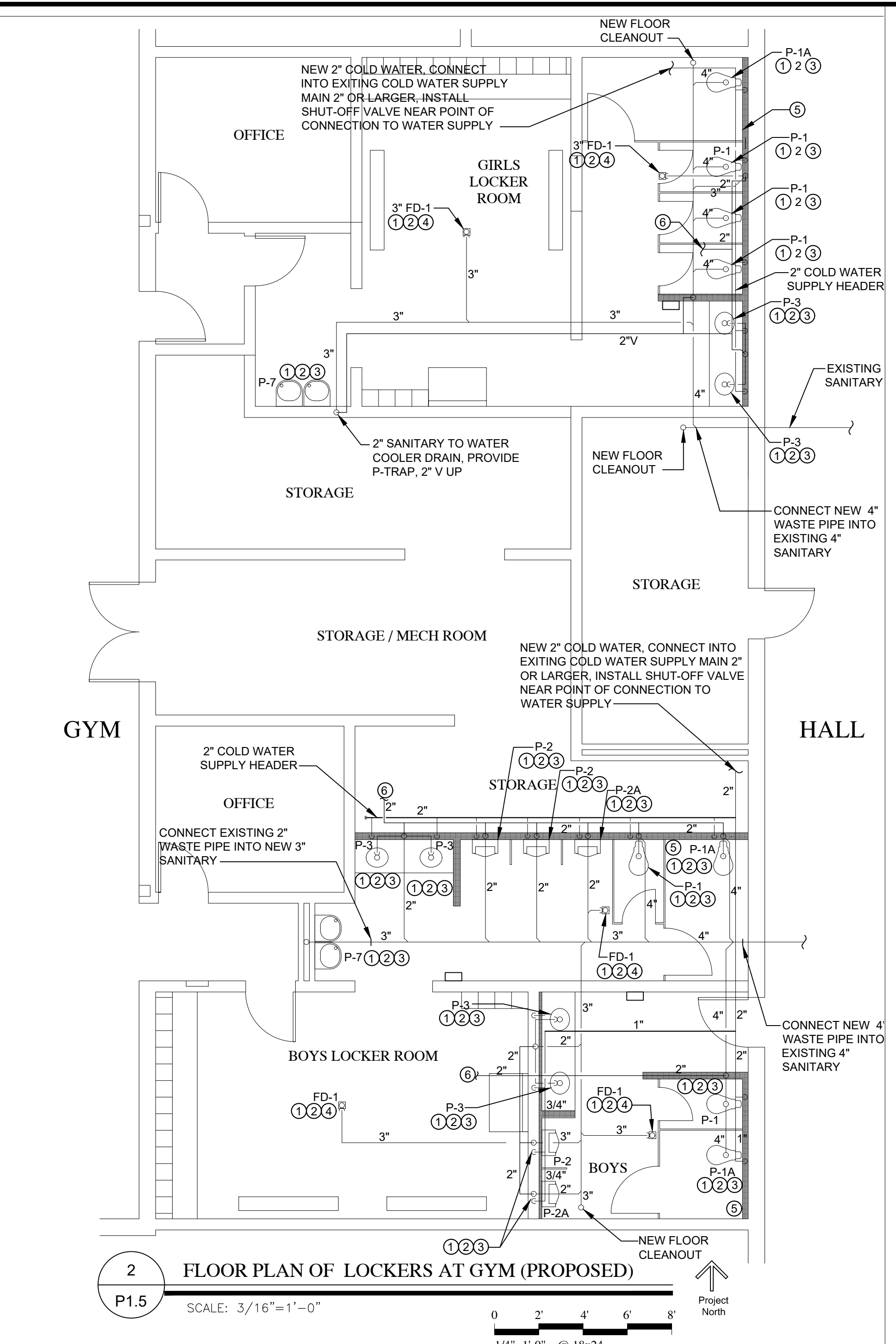
1 INCH

RELEASED FOR CONSTRUCTION



- DEMO NOTES**
- REMOVE FIXTURES AND TRIM
 - DEMOLISH THE EXISTING SANITARY WASTE & VENT SYSTEMS, SUPPLY SYSTEMS AS REQUIRED
 - REMOVE FLOOR DRAIN

- GENERAL SHEET NOTES:**
- RE-WORK (NEW PIPING) SANITARY WASTE/VENT SYSTEM IN AREA TO ACCOMMODATE NEW LAYOUT OF PLUMBING FIXTURES AND RECONNECT TO EXISTING AS REQUIRED.
 - RE-WORK (NEW PIPING) SUPPLY SYSTEM IN AREA TO ACCOMMODATE NEW LAYOUT OF PLUMBING FIXTURES AND RECONNECT TO EXISTING AS REQUIRED.



- NEW WORK NOTES**
- INSTALL NEW FIXTURE
 - INSTALL SANITARY WASTE/VENT FROM NEW PIPING SUB-BRANCH, EXTEND TO PLUMBING FIXTURES AS REQUIRED
 - INSTALL COLD WATER SUPPLIES FROM NEW PIPING SUB-BRANCH AND EXTEND TO PLUMBING FIXTURE AS REQUIRED, INSTALL WATER HAMMER ARRESTOR WHERE REQUIRED BY CODE
 - INSTALL NEW 3" FLOOR DRAIN EQUAL TO J.R. SMITH MODEL 2005 WITH TRAP PRIMER INLET. (COORDINATE WITH ARCHITECT FOR FLOOR SLOPE CRITERIA)
 - INSTALL 3/4" WALL HYDRANT UNDER COUNTER, EQUAL TO WOODFORD MODEL B24 WITH METAL HANDLE
 - CONNECT NEW VENT INTO EXISTING AS REQUIRED. VERIFY VENT SYSTEM EXTENDS THROUGH ROOF.

