

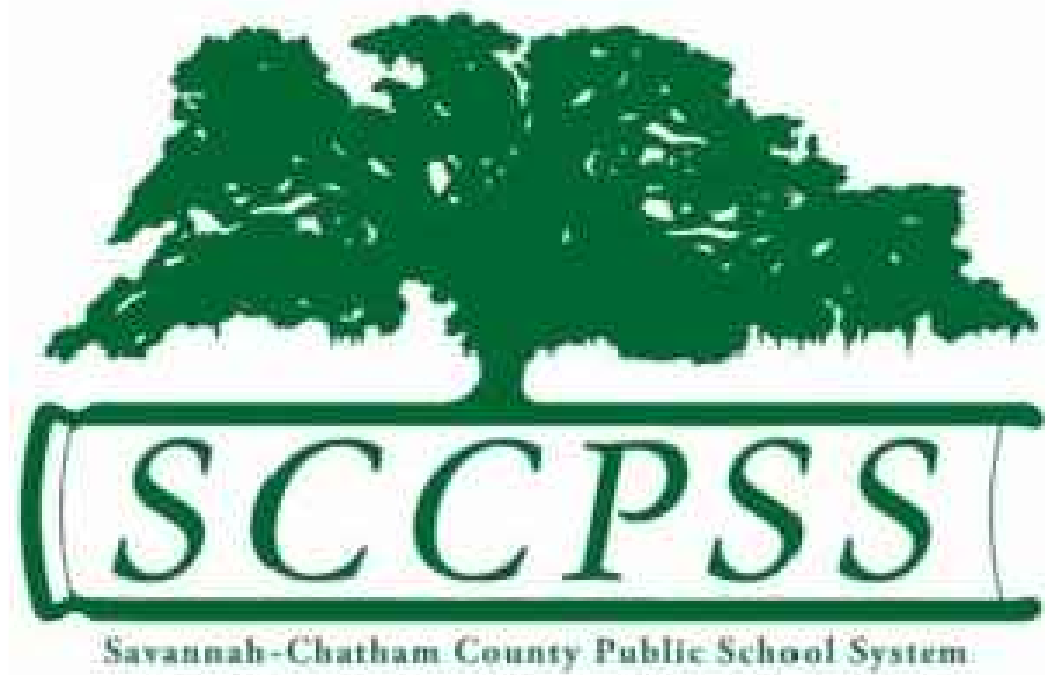
ROOF REPLACEMENT

for:

MYERS MIDDLE SCHOOL

2025 East 52nd Street,
Savannah, Georgia 31404

Owner:
SAVANNAH-CHATHAM COUNTY
PUBLIC SCHOOL SYSTEM
208 Bull Street,
Savannah, Georgia 31401



PROJECT NOTES

- REFER TO SUMMARY OF WORK

ABBREVIATIONS

@	AT
Ø	DIAMETER
"	INCH
AISC	AMERICAN INSTITUTE OF STEEL CONSTRUCTION
ASCE	AMERICAN SOCIETY OF CIVIL ENGINEERS
BUR	BUILT UP ROOFING
EX.	EXISTING
GA	GAUGE
LOW.	LOWER AREA
MAX.	MAXIMUM
MIN.	MINIMUM
N/A	NOT APPLICABLE
O.C.	ON CENTER
PART.	PARTIAL
SIM.	SIMILAR
TYP.	TYPICAL
UPP.	UPPER AREA
V.I.F.	VERIFY IN FIELD



351 Commercial Dr., Suite E, Savannah, GA 31406
Office: (912) 349-3661 Fax: (912) 777-4579

Partial Roof Replacement

for
Myers Middle School
2025 East 52nd Street
Savannah, Georgia 31404

SCCPSS
208 Bull Street
Savannah, Georgia 31401

CERTIFICATIONS

CONSULTANT

DATE	NO.	BY

REVISIONS

DATE	NO.	DESCRIPTION
01/19/2018	1	PERMITTING

RELEASES

COPYRIGHT © 2017
RAYMOND ENGINEERING-GEORGIA, INC.

ALL RIGHTS RESERVED.
THIS DRAWING AND ITS REPRODUCTIONS ARE THE PROPERTY OF RAYMOND ENGINEERING-GEORGIA, INC. & MAY NOT BE REPRODUCED, PUBLISHED, OR USED IN ANY WAY WITHOUT THE PERMISSION OF RAYMOND ENGINEERING-GEORGIA, INC. RETURN PRINTS TO RAYMOND ENGINEERING-GEORGIA, INC. UPON COMPLETION OF USE FOR WHICH THEY WERE ISSUED.

ENG. PROJECT NO.	SAV1018.002
DESIGN BY:	NTP
DRAWN BY:	SCJA
CHECKED BY:	AD

COVER PAGE

G-100

DRAWING INDEX

GENERAL	
G-0.01	COVER PAGE
ARCHITECTURAL	
A-101	ROOF PLAN
A-102	ROOF WIND ZONES
A-201	PARTIAL BUILDING ELEVATIONS
A-301	WALL SECTIONS
A-501	ROOF DETAILS
A-502	ROOF DETAILS

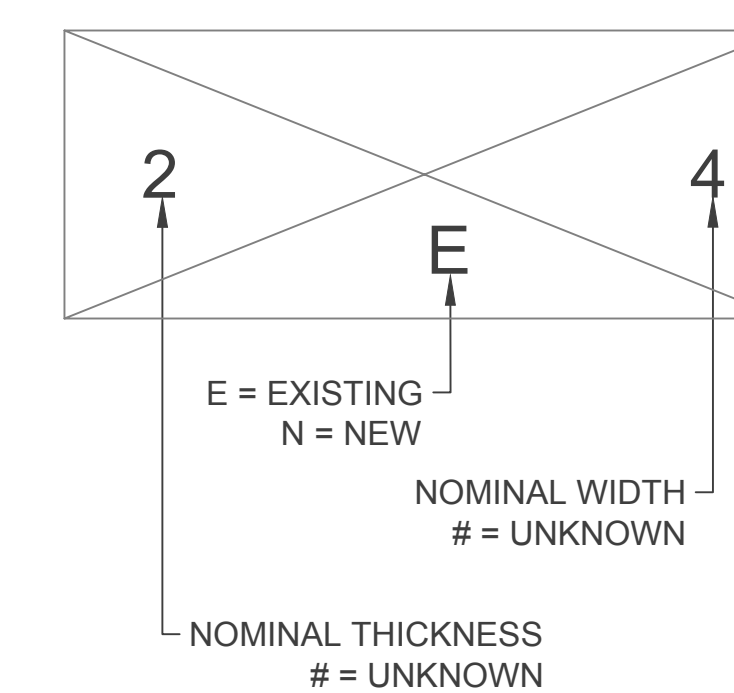
REFERENCES / DESIGN CONSIDERATIONS

ASTM -	AMERICAN SOCIETY FOR TESTING AND MATERIALS
U.L. -	UNDERWRITERS' LABORATORIES
F.M.-	FACTORY MUTUAL OR FACTORY MUTUAL RESEARCH CORPORATION
SMACNA -	SHEET METAL AND AIR CONDITIONING CONTRACTOR ASSOCIATION
AIA -	AMERICAN INSTITUTE OF ARCHITECTS
NRCA -	NATIONAL ROOFING CONTRACTOR ASSOCIATION
ARMA -	ASPHALT ROOFING MANUFACTURERS ASSOCIATION
IBC -	INTERNATIONAL BUILDING CODE, 2012 EDITION WITH 2014 GEORGIA STATE AMENDMENTS
IPC -	INTERNATIONAL PLUMBING CODE, 2012 EDITION WITH 2014 GEORGIA STATE AMENDMENTS.
NFPA -	NATIONAL FIRE PREVENTION ASSOCIATION

DRAWING NOTES

- THESE NOTES ARE FOR THE CONTRACTOR, AND ALL ASSOCIATED SUBCONTRACTORS, MANUFACTURERS, AND SUPPLIERS.
- SHOULD DISCREPANCY EXIST BETWEEN THE DRAWINGS AND SPECIFICATION, THE CONTRACTOR AND/OR SUBCONTRACTOR SHALL MAKE MENTION TO THE ENGINEER FOR DIRECTION PRIOR TO PROCEEDING WITH WORK.
- THE ROOF PLANS AND DETAILS ARE REPRESENTATIVE IN NATURE, AND ARE PROVIDED TO SHOW THE RELATIONSHIP BETWEEN SPECIFIED MATERIALS. FOR CLARITY, ALL SPECIFIED MATERIALS REQUIRED FOR USE MAY NOT BE SHOWN ON DETAILS, AND CONTRACTOR SHALL ENSURE THAT CONSTRUCTION, INSTALLATION, AND APPLICATION OF MATERIALS IS DONE IN ACCORDANCE WITH SPECIFICATION.
- ALL MEASUREMENTS AND EXISTING CONDITIONS MUST BE VERIFIED PRIOR TO ORDERING MATERIALS AND/OR PROCEEDING WITH WORK.
- ALL CROSS-SECTIONAL DETAILS REPRESENT TYPICAL CONDITIONS, AND THOSE CROSS-SECTIONAL DETAILS SHALL BE APPLIED IN MERIT TO APPLICABLE AREAS ON THE ROOF EVEN THOUGH NOT SPECIFICALLY MARKED ON DRAWINGS OR REFERRED TO IN SPECIFICATIONS.
- ALL MANUFACTURER'S RECOMMENDATIONS MUST BE STRICTLY ADHERED TO, UNLESS MORE STRINGENT REQUIREMENTS LIE WITHIN THE SPECIFICATION OR DRAWINGS.

WOOD BLOCKING DIAGRAM



PAPER SIZE ARCH FULL BLEED D (24.00 X 36.00 INCHES) LAST SAVED 2/8/2018 9:29 AM

LEGEND

	ROOF OUTLINE/ GRAVE-STOP FASCIA		GUTTER (GU)
	DOWNSPOUT (DS)		ROOF AREA NOT-IN- CONTRACT (N.I.C.)
	EXHAUST FAN (EF)		ROOF-TO-WALL EXPANSION JOINT
	ROOF-TO-ROOF EXPANSION JOINT		ROOF WALKWAY PAD
	ELEVATION CHANGE		

SHEET NOTES

- 1 REMOVE EXISTING ROOFING AND DECKING DOWN TO DECK. FURNISH AND INSTALL NEW MECHANICALLY ATTACHED PVC ROOF RECOVER SYSTEM. REFER TO SECTION 01 11 00 OF SPECIFICATION FOR ADDITIONAL INFORMATION.
- 2 REMOVE AND INSTALL NEW GUTTER AND DRIP EDGE
- 3 REMOVE GUTTERS, DOWNSPOUTS, AND FLASHING. FURNISH AND INSTALL NEW GUTTER, DRIP EDGE
- BASE BID - FURNISH AND INSTALL NEW BACK PANELS. SEE DETAIL 2/A-301
- 4 ALTERNATE #1 - FURNISH AND INSTALL NEW METAL ROOF PANELS. SEE DETAIL 3/A-301.

Partial Roof Replacement

for
Myers Middle School
2025 East 52nd Street
Savannah, Georgia 31404

SCPPSS
208 Bull Street
Savannah, Georgia 31401

CERTIFICATIONS

CONSULTANT

DATE	NO.	BY

REVISIONS

DATE	NO.	DESCRIPTION
01/19/2018	1	PERMITTING

RELEASES

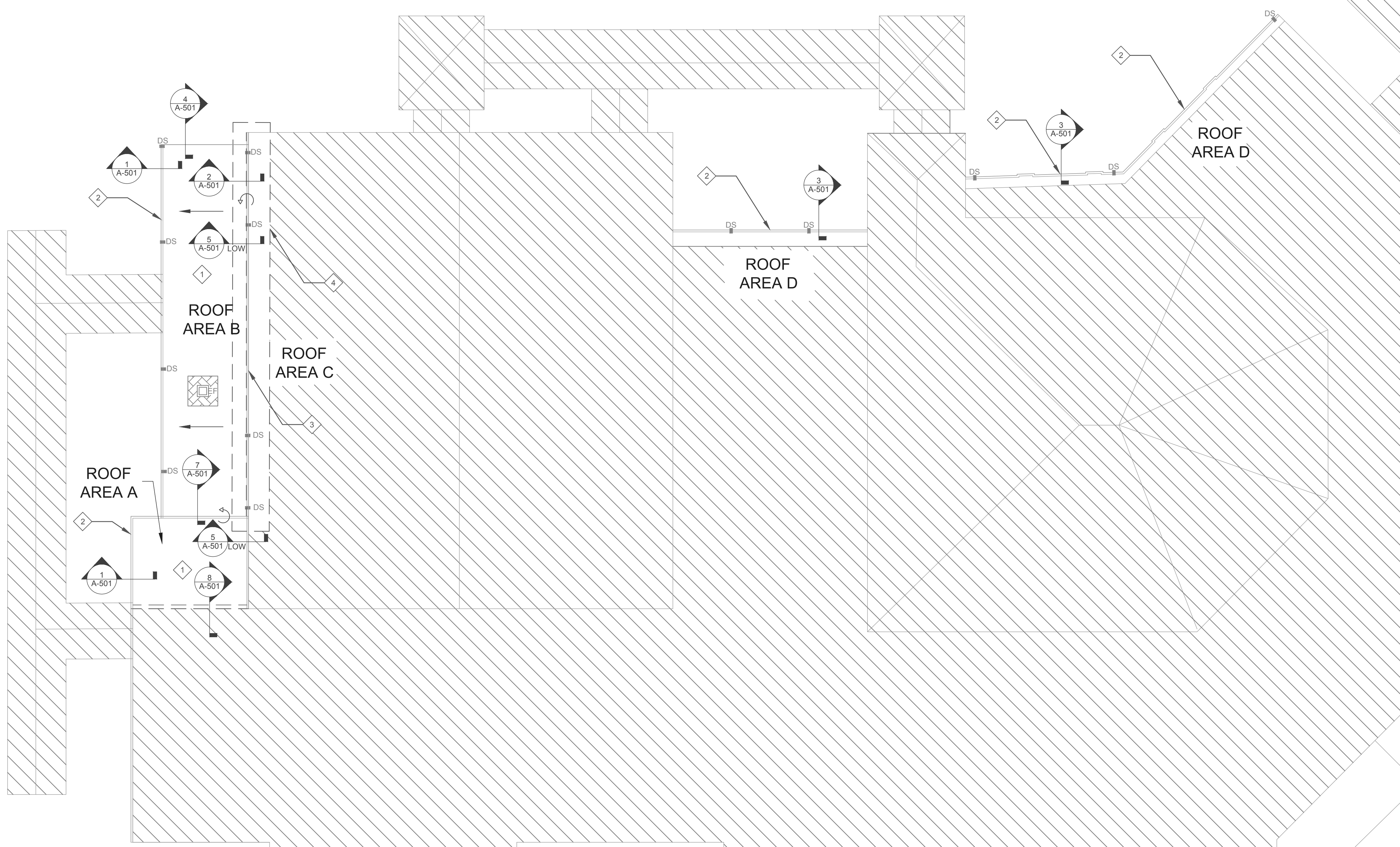
COPYRIGHT © 2017
RAYMOND ENGINEERING-GEORGIA, INC

ALL RIGHTS RESERVED.
THIS DRAWING AND ITS REPRODUCTIONS ARE THE PROPERTY OF RAYMOND ENGINEERING-GEORGIA, INC. & MAY NOT BE REPRODUCED, PUBLISHED, OR USED IN ANY WAY WITHOUT THE PERMISSION OF RAYMOND ENGINEERING-GEORGIA, INC. RETURN PRINTS TO RAYMOND ENGINEERING-GEORGIA, INC UPON COMPLETION OF USE FOR WHICH THEY WERE ISSUED.

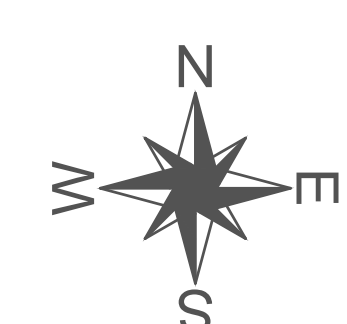
ENG. PROJECT NO.	SAV1018.002
DESIGN BY:	NTP
DRAWN BY:	SCJA
CHECKED BY:	AD

ROOF PLAN

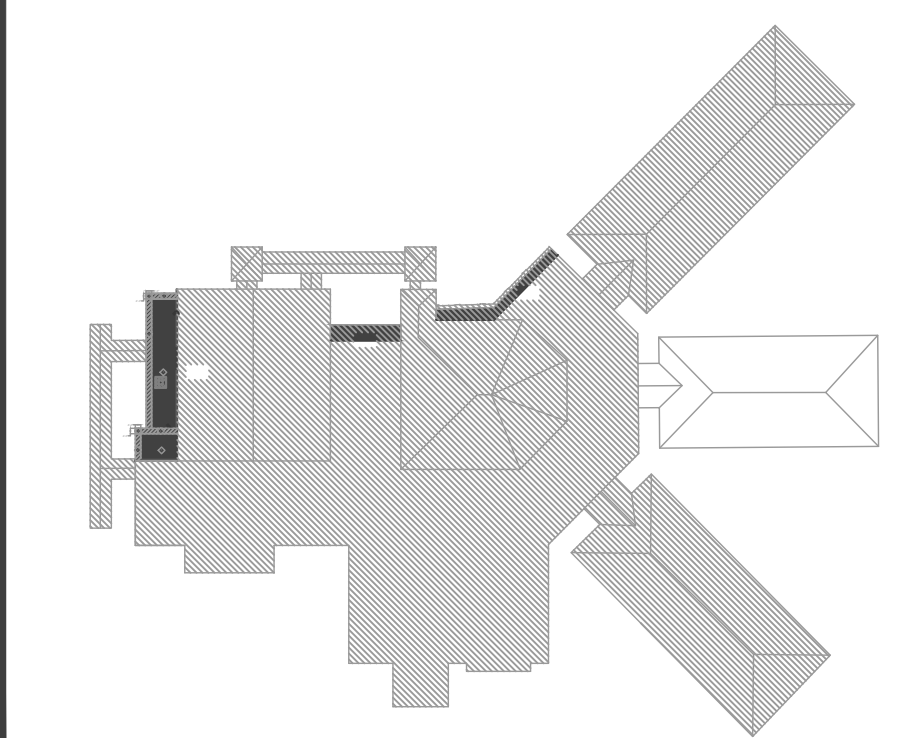
A-101



1 ROOF PLAN
SCALE: 1/16" = 1'-0"



KEYPLAN



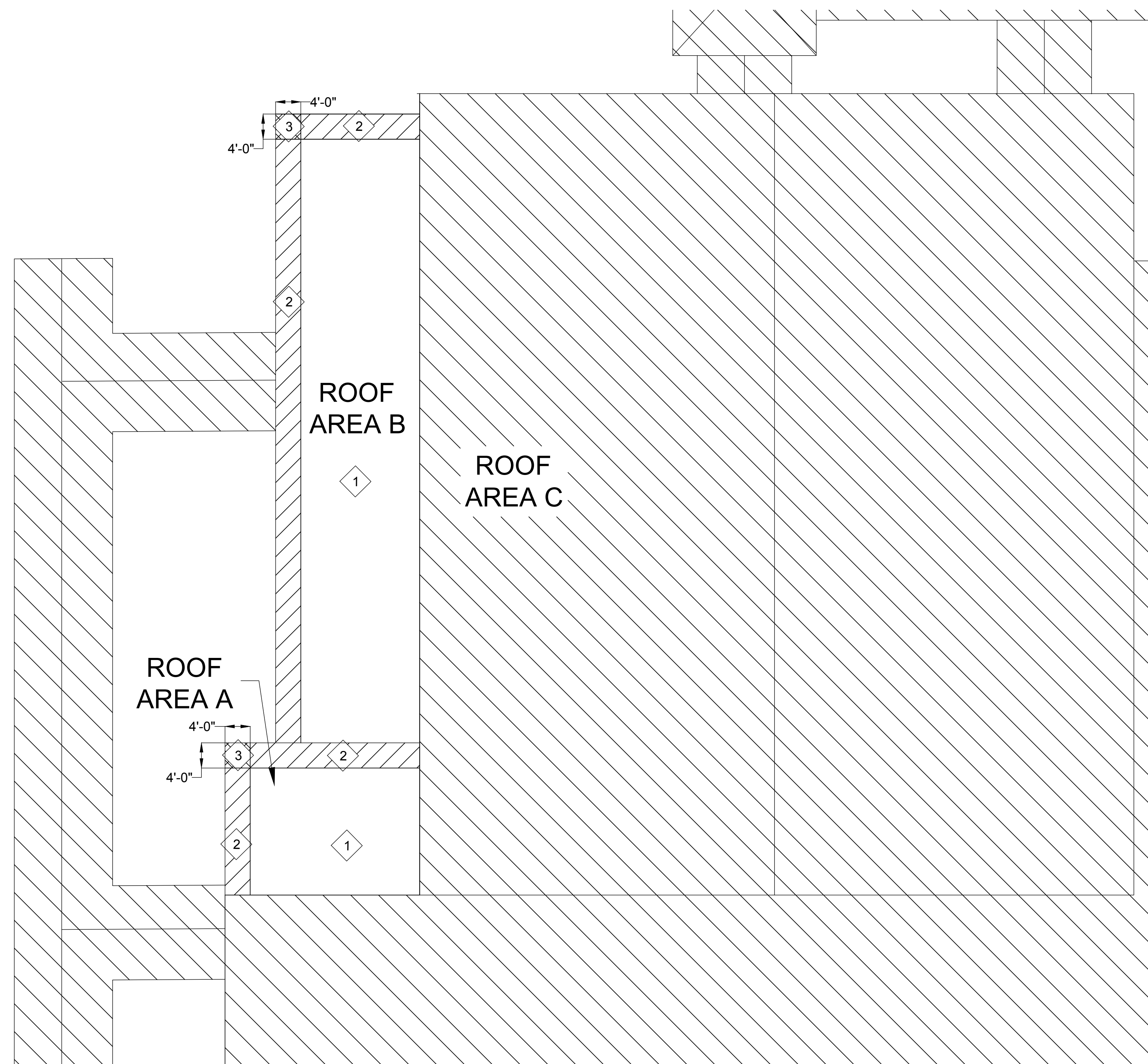
LEGEND

	ROOF OUTLINE/ GRAVE-STOP FASCIA		WIND ZONE NO. 1
	ROOF AREA NOT-IN- CONTRACT (N.I.C.)		WIND ZONE NO. 2
	WIND ZONE NO. 3		

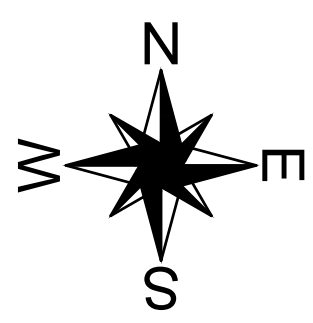
SHEET NOTES

ROOF AREAS A & B

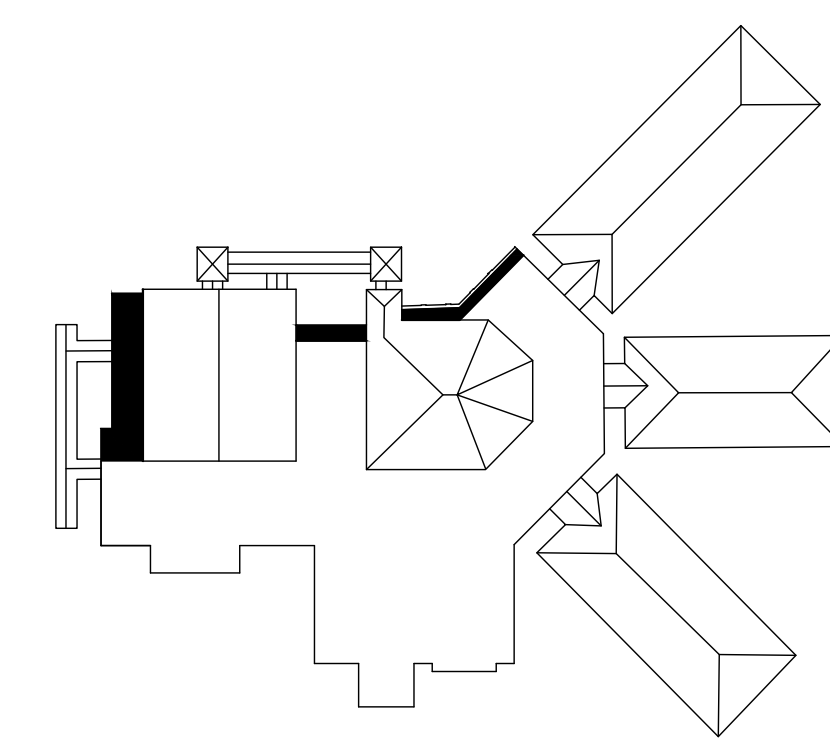
- WIND ZONE NO. 1: 21.84 PSF
- WIND ZONE NO. 2: 39.67 PSF
- WIND ZONE NO. 3: 59.70 PSF



1 ROOF WIND ZONES
SCALE: 3/32" = 1'-0"



KEYPLAN



Partial Roof Replacement

for
Myers Middle School
2025 East 52nd Street
Savannah, Georgia 31404

SCCPSS
208 Bull Street
Savannah, Georgia 31401

CERTIFICATIONS

CONSULTANT

DATE	NO.	BY

REVISIONS

DATE	NO.	DESCRIPTION
01/19/2018	1	PERMITTING

RELEASES

COPYRIGHT © 2017
RAYMOND ENGINEERING-GEORGIA, INC

ALL RIGHTS RESERVED.
THIS DRAWING AND ITS REPRODUCTIONS ARE THE PROPERTY
OF RAYMOND ENGINEERING-GEORGIA, INC. & MAY NOT BE
REPRODUCED, PUBLISHED, OR USED IN ANY WAY WITHOUT
THE PERMISSION OF RAYMOND ENGINEERING-GEORGIA, INC.
RETURN PRINTS TO RAYMOND ENGINEERING-GEORGIA, INC
UPON COMPLETION OF USE FOR WHICH THEY WERE ISSUED.

ENG. PROJECT NO.	SAV1018.002
DESIGN BY:	NTP
DRAWN BY:	SCJA
CHECKED BY:	AD

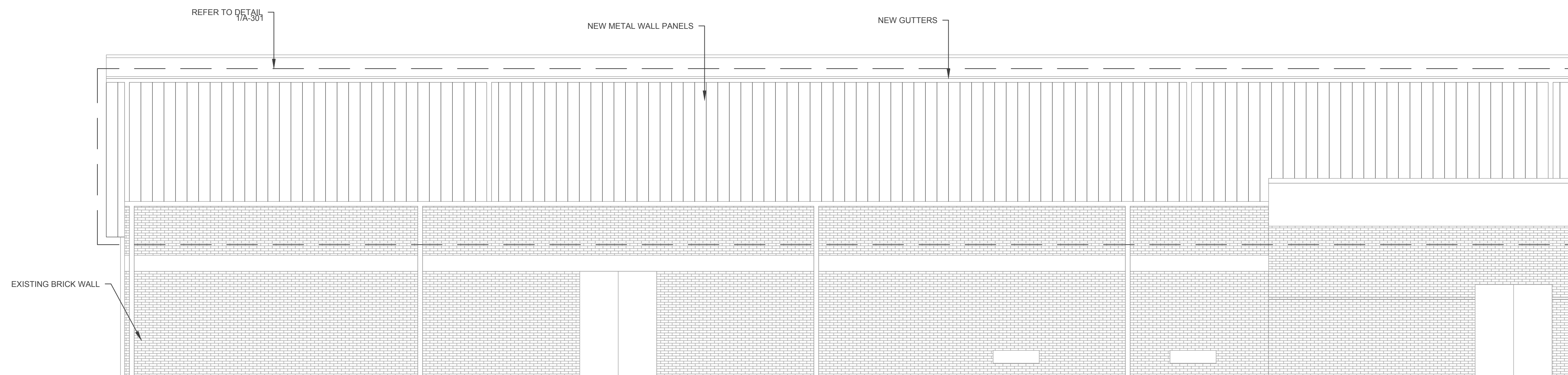
ROOF WIND ZONES

A-101

Partial Roof Replacement

for
Myers Middle School
2025 East 52nd Street
Savannah, Georgia 31404

SCCPSS
208 Bull Street
Savannah, Georgia 31401



1 PARTIAL ELEVATION
SCALE: 3/16" = 1'-0"

CERTIFICATIONS

CONSULTANT

DATE	NO.	BY

REVISIONS

DATE	NO.	DESCRIPTION
01/19/2018	1	PERMITTING

RELEASES

COPYRIGHT © 2017
RAYMOND ENGINEERING-GEORGIA, INC

ALL RIGHTS RESERVED.
THIS DRAWING AND ITS REPRODUCTIONS ARE THE PROPERTY
OF RAYMOND ENGINEERING-GEORGIA, INC. & MAY NOT BE
REPRODUCED, PUBLISHED, OR USED IN ANY WAY WITHOUT
THE PERMISSION OF RAYMOND ENGINEERING-GEORGIA, INC.
RETURN PRINTS TO RAYMOND ENGINEERING-GEORGIA, INC
UPON COMPLETION OF USE FOR WHICH THEY WERE ISSUED.

ENG. PROJECT NO.	SAV1018.002
DESIGN BY:	NTP
DRAWN BY:	SCJA
CHECKED BY:	AD

PARTIAL ELEVATION

A-201

Partial Roof Replacement

for
Myers Middle School
2025 East 52nd Street
Savannah, Georgia 31404

SCCPSS
208 Bull Street
Savannah, Georgia 31401

CERTIFICATIONS

CONSULTANT

DATE	NO.	BY

REVISIONS

DATE	NO.	DESCRIPTION
01/19/2018	1	PERMITTING

RELEASES

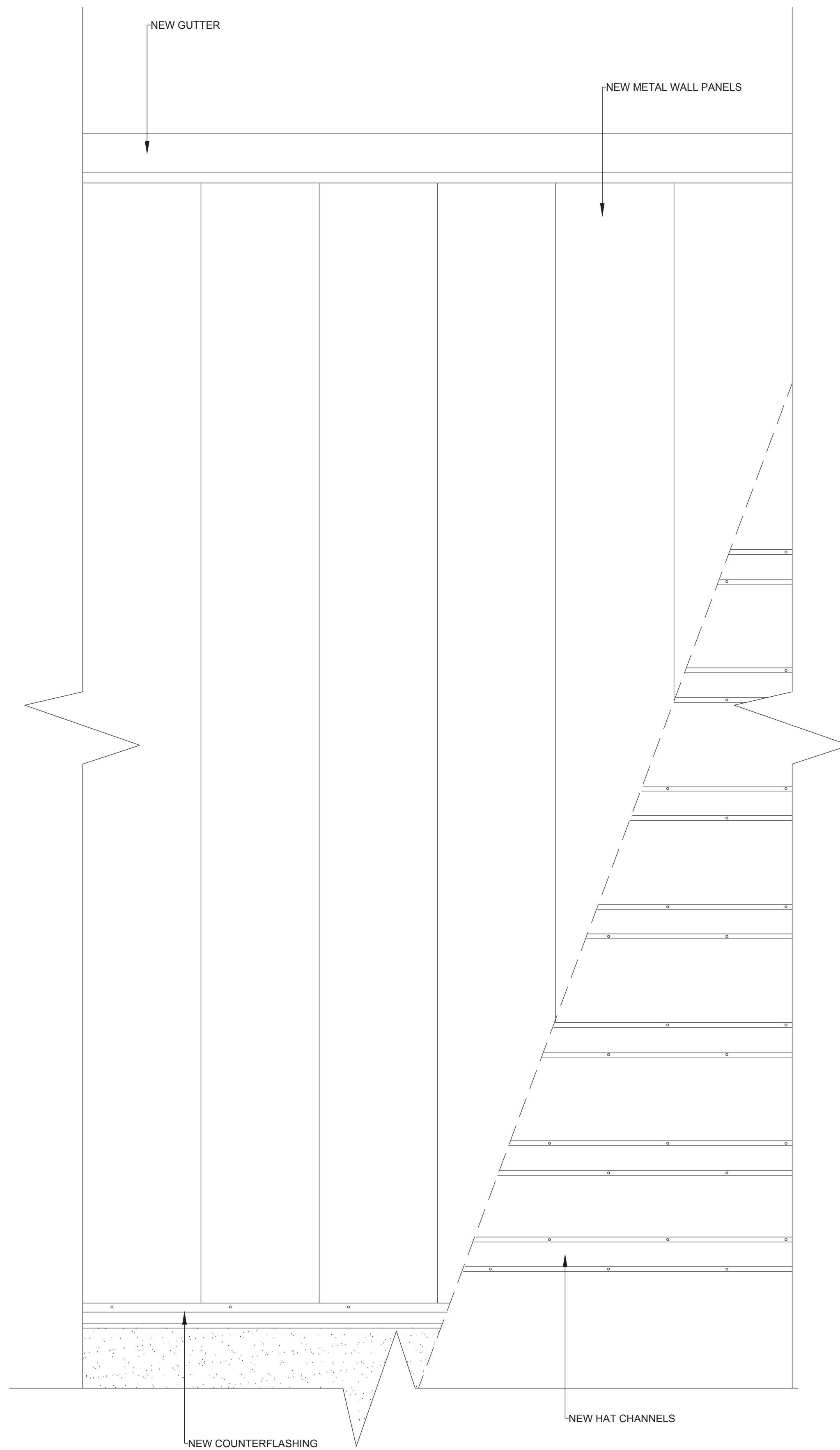
COPYRIGHT © 2017
RAYMOND ENGINEERING-GEORGIA, INC

ALL RIGHTS RESERVED.
THIS DRAWING AND ITS REPRODUCTIONS ARE THE PROPERTY
OF RAYMOND ENGINEERING-GEORGIA, INC. & MAY NOT BE
REPRODUCED, PUBLISHED, OR USED IN ANY WAY WITHOUT
THE PERMISSION OF RAYMOND ENGINEERING-GEORGIA, INC.
RETURN PRINTS TO RAYMOND ENGINEERING-GEORGIA, INC
UPON COMPLETION OF USE FOR WHICH THEY WERE ISSUED.

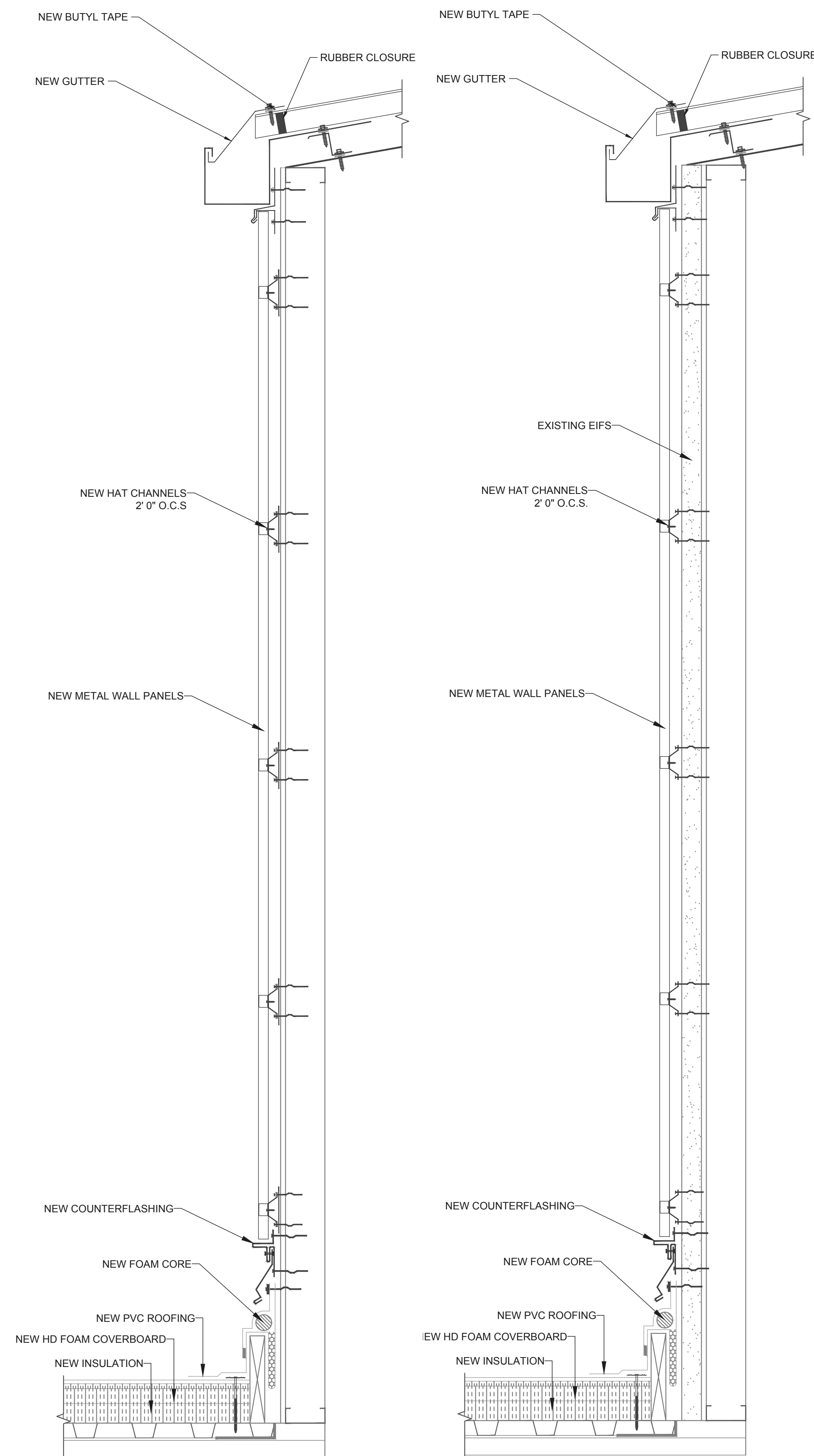
ENG. PROJECT NO.	SAV1018.002
DESIGN BY:	NTP
DRAWN BY:	SCJA
CHECKED BY:	AD

WALL SECTIONS

A-301



1 TYP. WALL SECTION ELEVATION
SCALE: 1 1/2" : 1'-0"



2 BASE BID: REMOVE EIFS & PROVIDE
BACK PANELS
SCALE: 1 1/2" : 1'-0"

3 ALT. 1.: LEAVE EIFS & PROVIDE METAL
PANEL TO COVER
SCALE: 1 1/2" : 1'-0"

PAPER SIZE ARCH FULL BLEED D (24.00 X 36.00 INCHES) LAST SAVED 2/8/2019 9:29 AM

Partial Roof Replacement

for
Myers Middle School
2025 East 52nd Street
Savannah, Georgia 31404

SCCPSS
208 Bull Street
Savannah, Georgia 31401

CERTIFICATIONS

CONSULTANT

DATE	NO.	BY

REVISIONS

DATE	NO.	DESCRIPTION
01/19/2018	1	PERMITTING

RELEASES

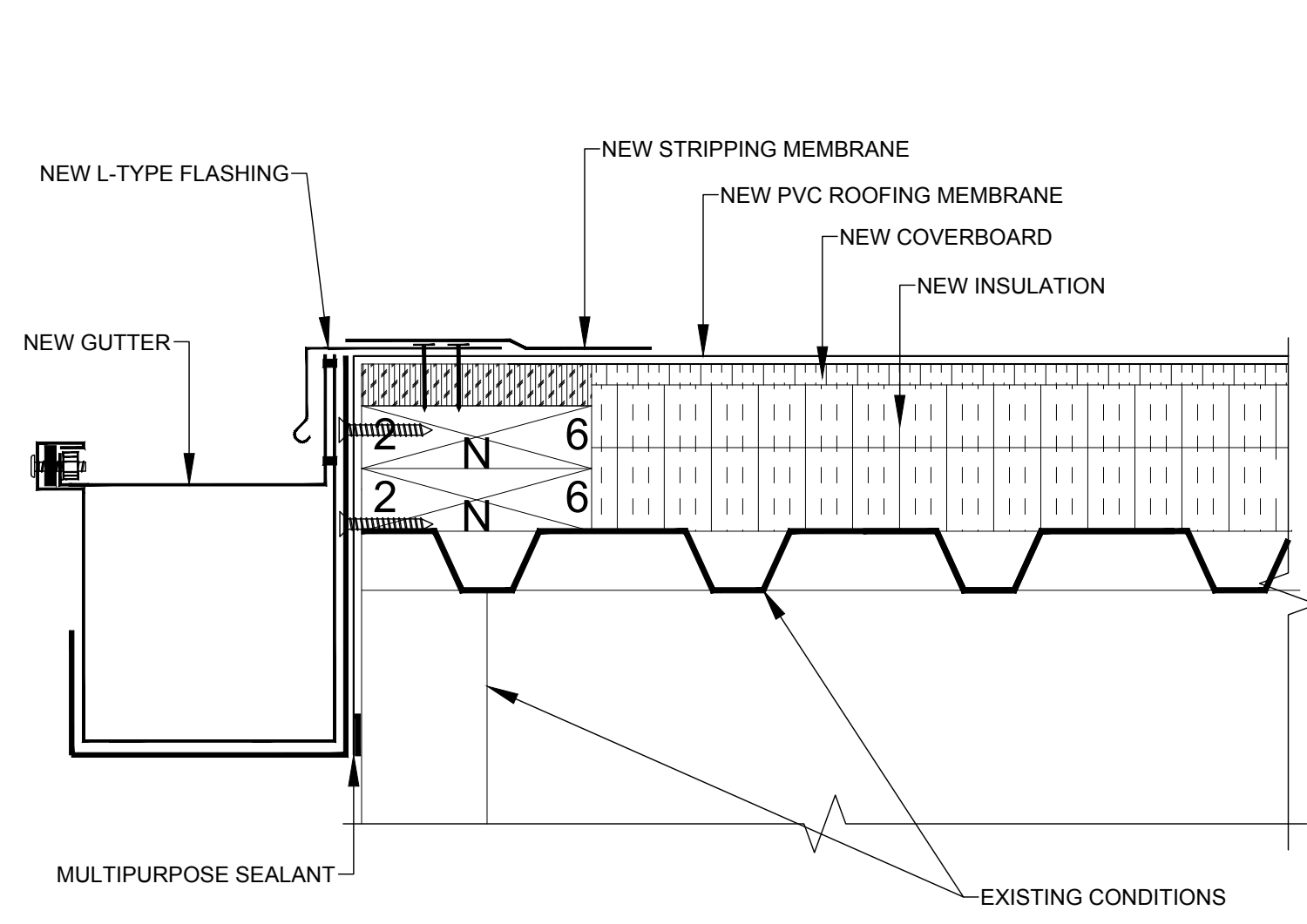
COPYRIGHT © 2017
RAYMOND ENGINEERING-GEORGIA, INC

ALL RIGHTS RESERVED.
THIS DRAWING AND ITS REPRODUCTIONS ARE THE PROPERTY
OF RAYMOND ENGINEERING-GEORGIA, INC. & MAY NOT BE
REPRODUCED, PUBLISHED, OR USED IN ANY WAY WITHOUT
THE PERMISSION OF RAYMOND ENGINEERING-GEORGIA, INC.
RETURN PRINTS TO RAYMOND ENGINEERING-GEORGIA, INC
UPON COMPLETION OF USE FOR WHICH THEY WERE ISSUED.

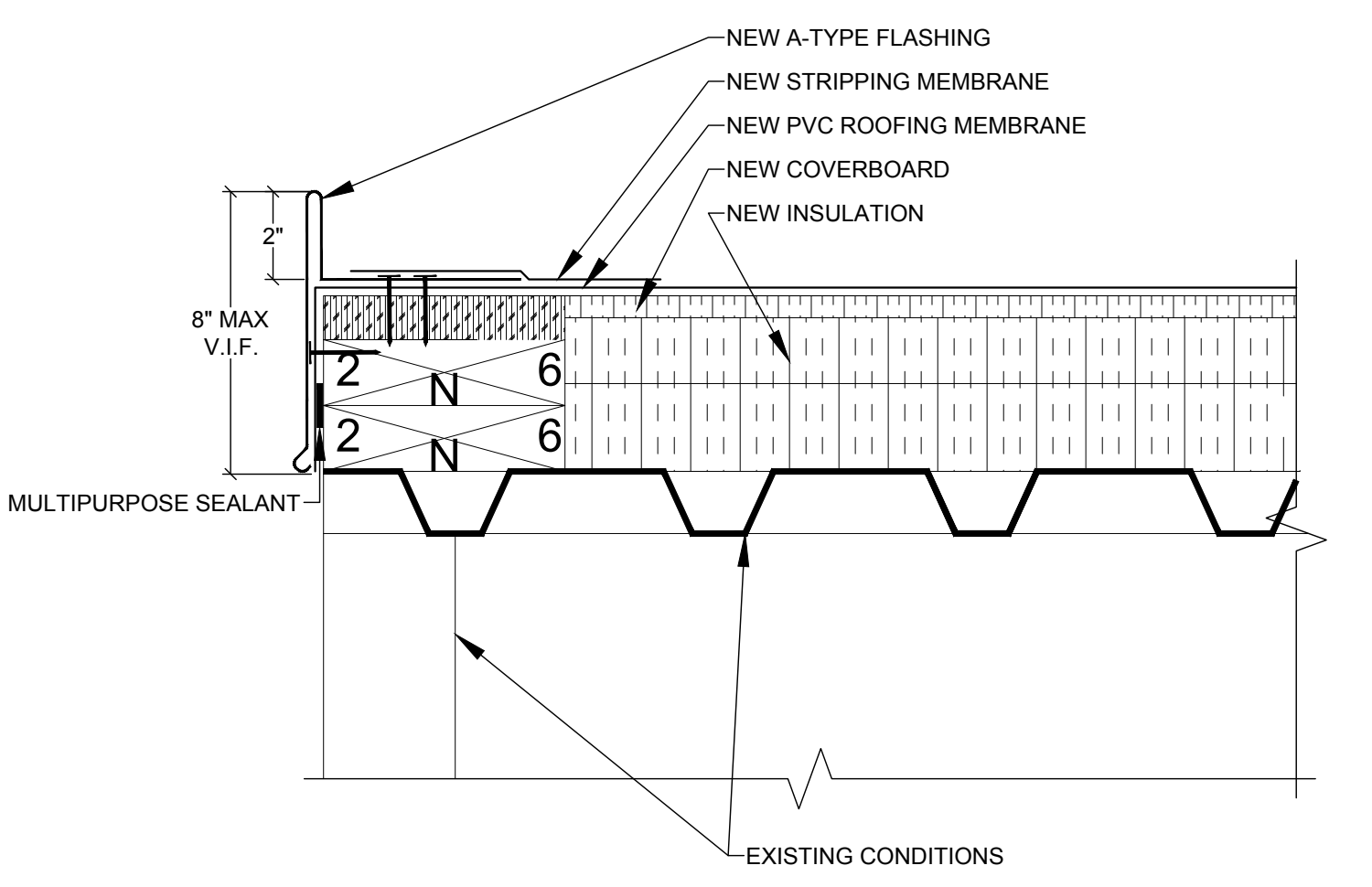
ENG. PROJECT NO.	SAV1018.002
DESIGN BY:	NTP
DRAWN BY:	SCJA
CHECKED BY:	AD

ROOF DETAILS

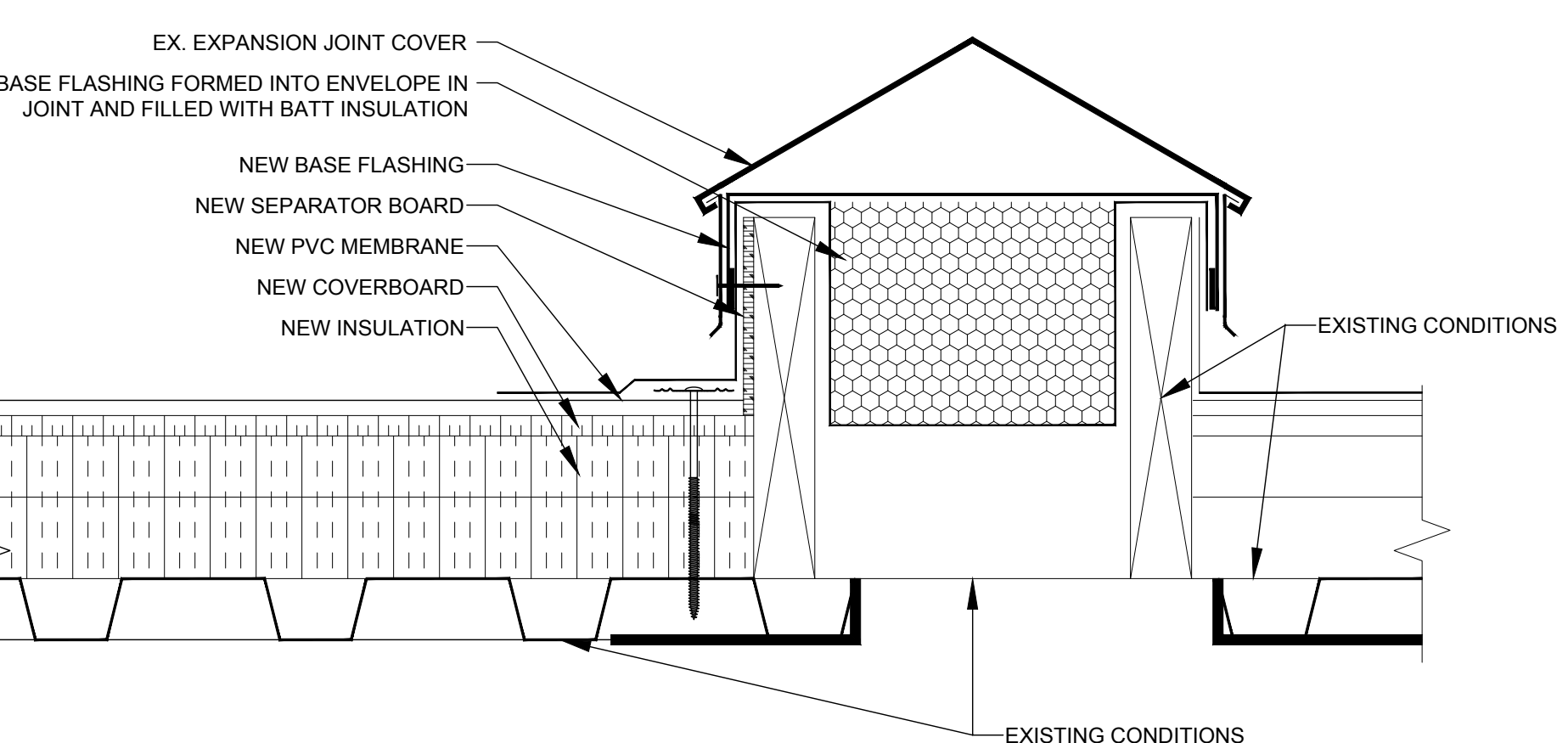
A-501



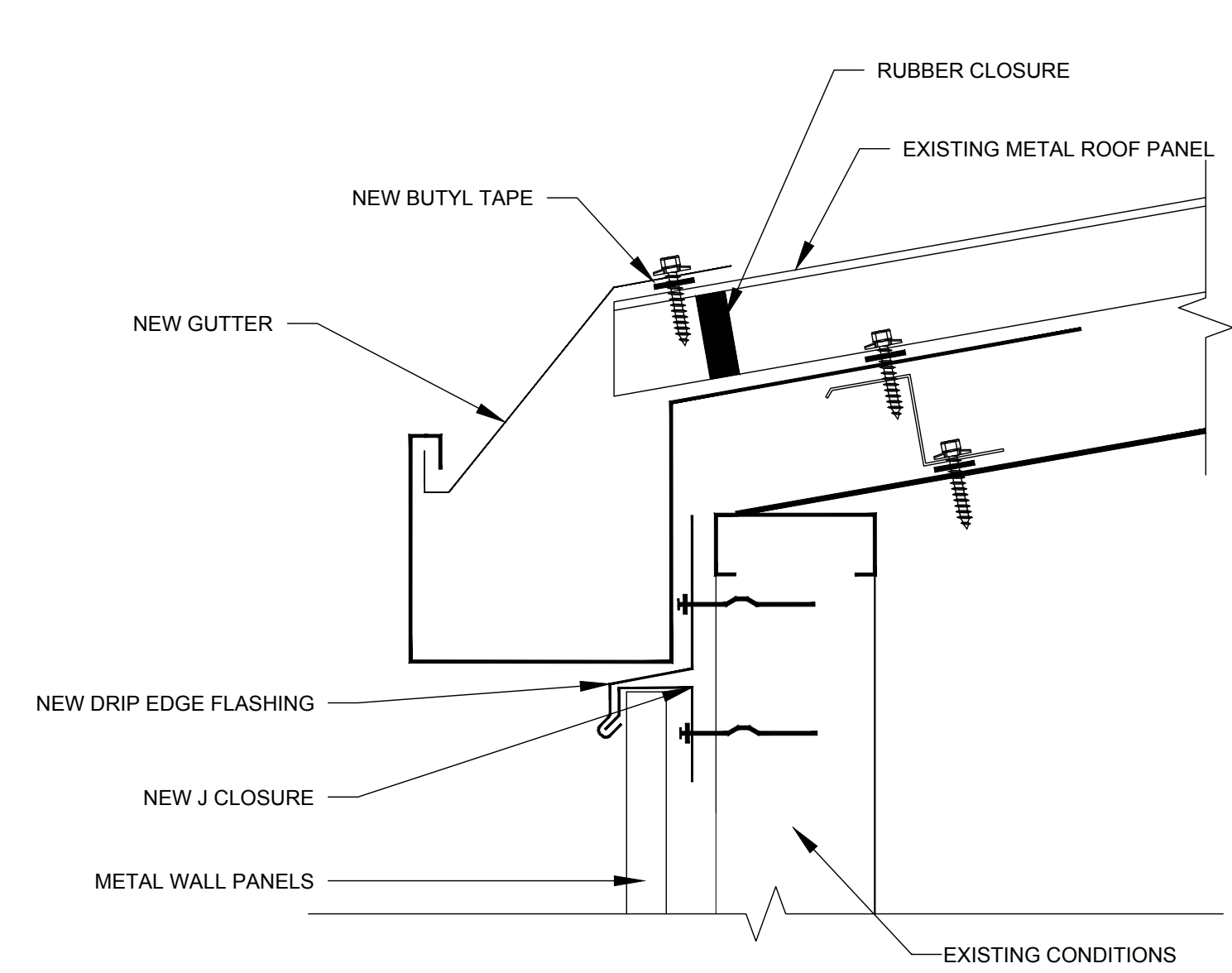
1 NEW GUTTER DETAIL
SCALE: 3" : 1'-0"



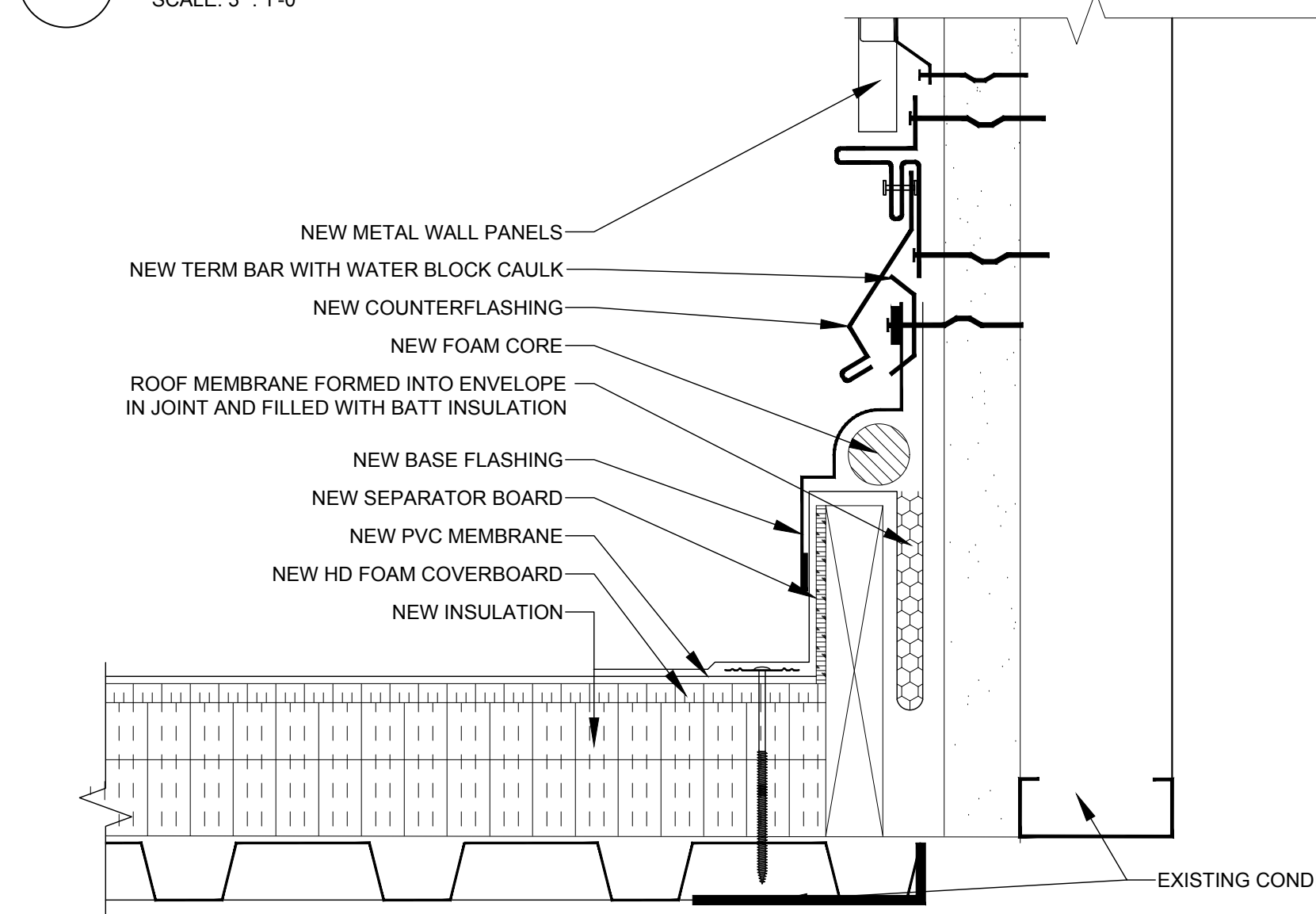
4 NEW RAKE EAVE DETAIL
SCALE: 3" : 1'-0"



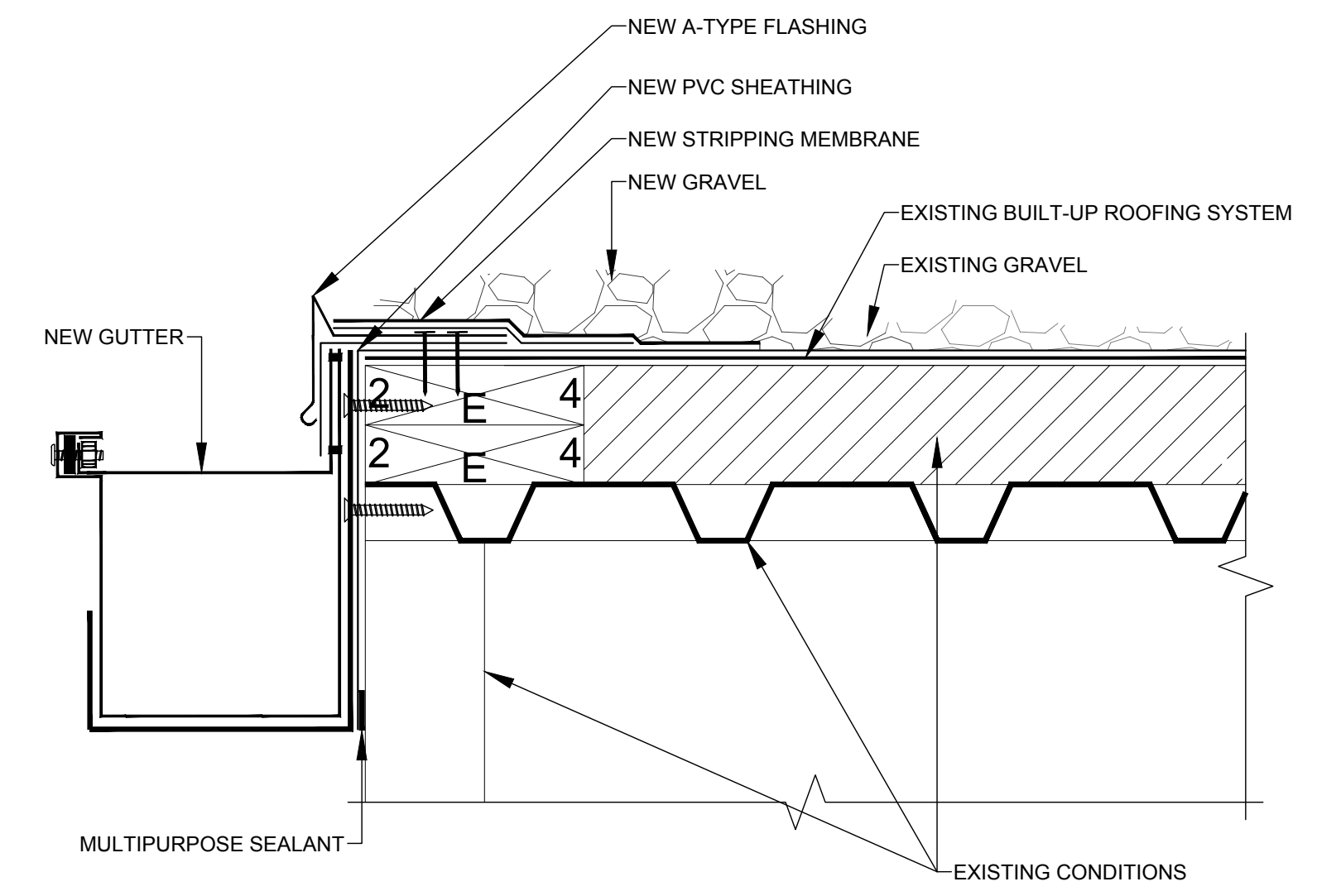
6 ROOF-TO-ROOF EXPANSION JOINT
SCALE: 3/4" : 1'-0"



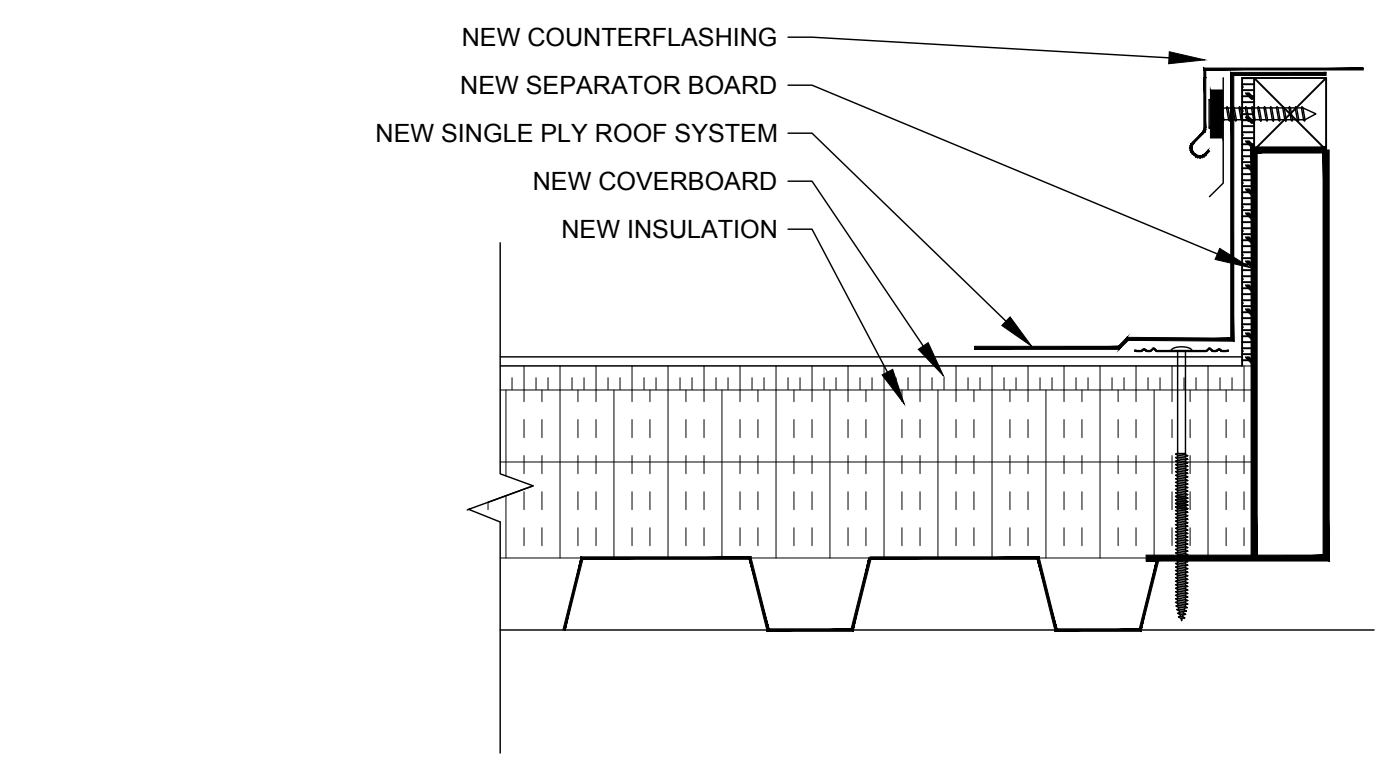
2 NEW GUTTER DETAIL
SCALE: 3" : 1'-0"



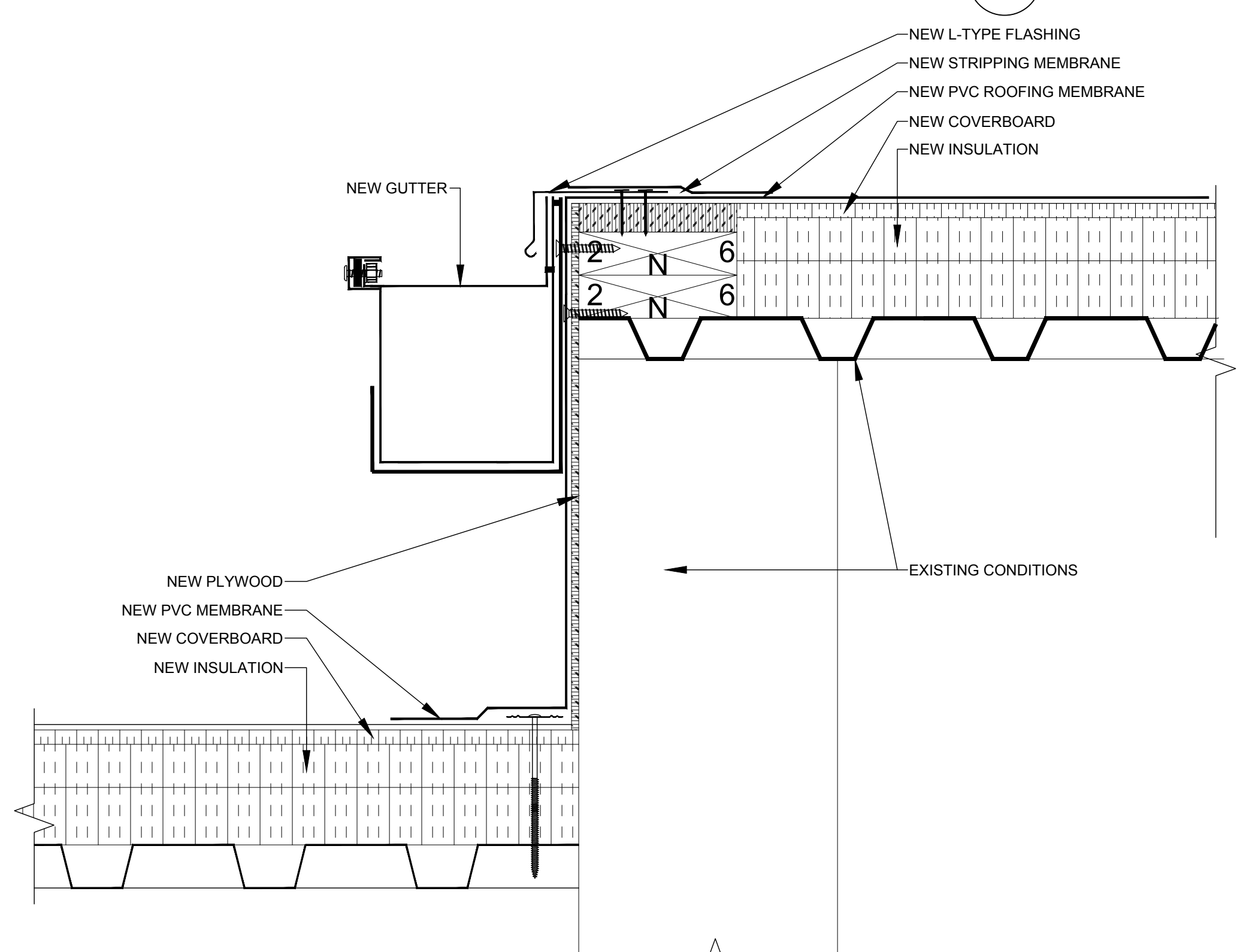
5 NEW ROOF-TO-WALL EXPANSION JOINT
SCALE: 3" : 1'-0"



3 NEW GUTTER DETAIL
SCALE: 3" : 1'-0"



5 TYP. ROOF CURB DETAIL
SCALE: 3" : 1'-0"



7 NEW LOW-TO-HIGH ROOF DETAIL
SCALE: 3/4" : 1'-0"

Partial Roof Replacement

for
Myers Middle School
2025 East 52nd Street
Savannah, Georgia 31404

SCCPSS
208 Bull Street
Savannah, Georgia 31401

CERTIFICATIONS

CONSULTANT

DATE	NO.	BY

REVISIONS

DATE	NO.	DESCRIPTION
01/19/2018	1	PERMITTING

RELEASES

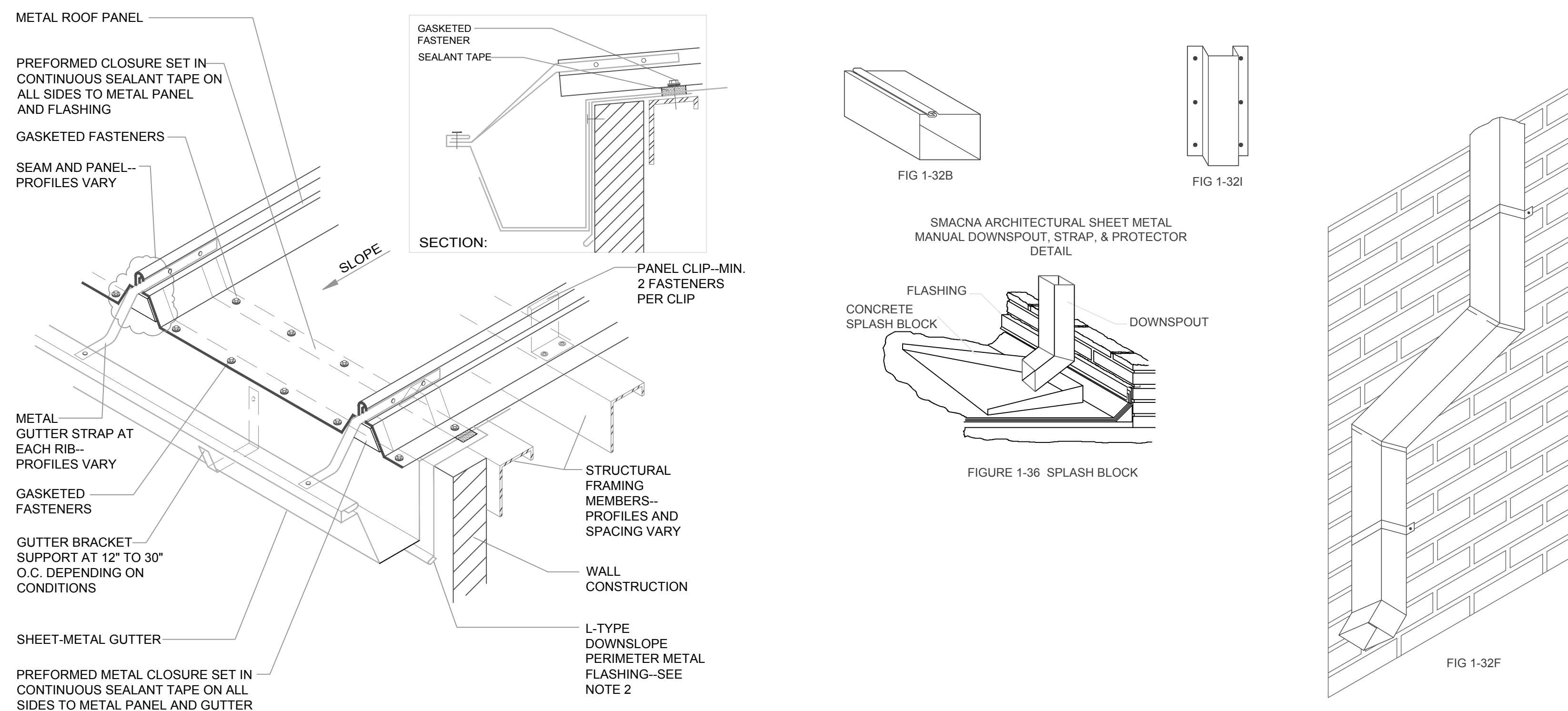
COPYRIGHT © 2017
RAYMOND ENGINEERING-GEORGIA, INC

ALL RIGHTS RESERVED.
THIS DRAWING AND ITS REPRODUCTIONS ARE THE PROPERTY
OF RAYMOND ENGINEERING-GEORGIA, INC. & MAY NOT BE
REPRODUCED, PUBLISHED, OR USED IN ANY WAY WITHOUT
THE PERMISSION OF RAYMOND ENGINEERING-GEORGIA, INC.
RETURN PRINTS TO RAYMOND ENGINEERING-GEORGIA, INC
UPON COMPLETION OF USE FOR WHICH THEY WERE ISSUED.

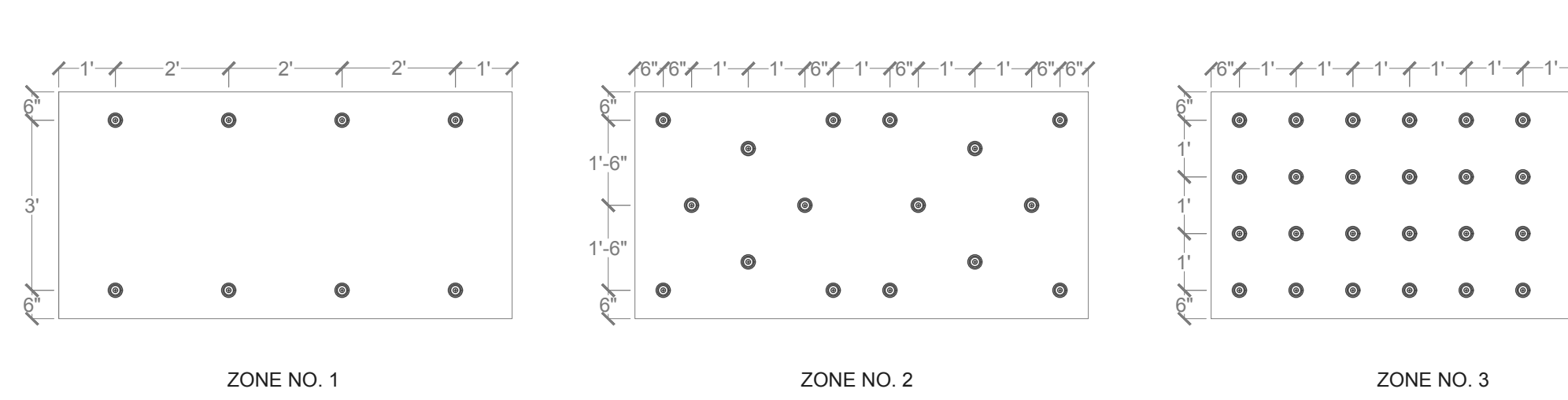
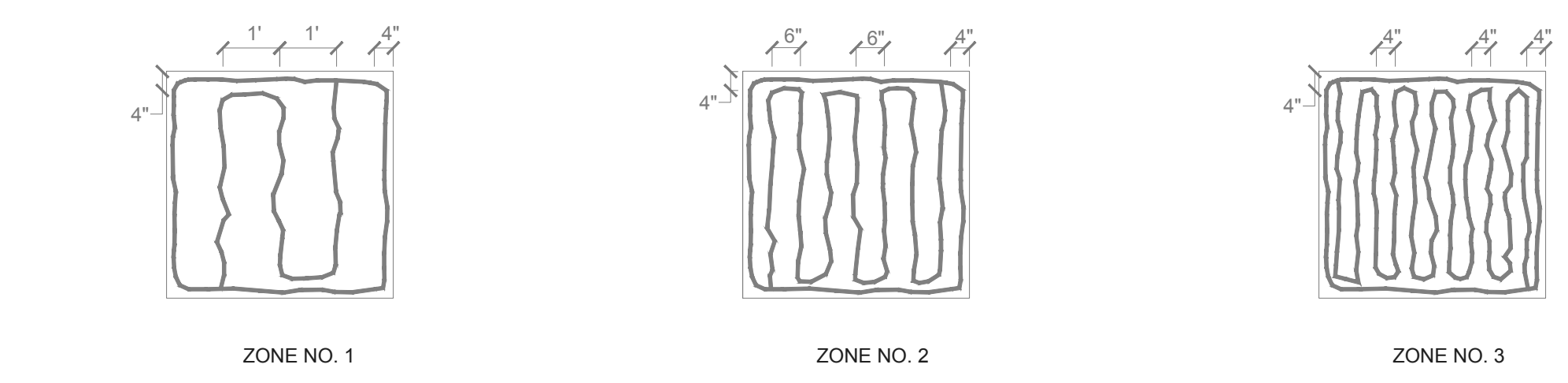
ENG. PROJECT NO.	SAV1018.002
DESIGN BY:	NTP
DRAWN BY:	SCJA
CHECKED BY:	AD

ROOF DETAILS

A-502



1 TYP. GUTTER DETAIL (NRCA DETAIL STM-02A; 2008)
SCALE: 1 1/2" : 1'-0"

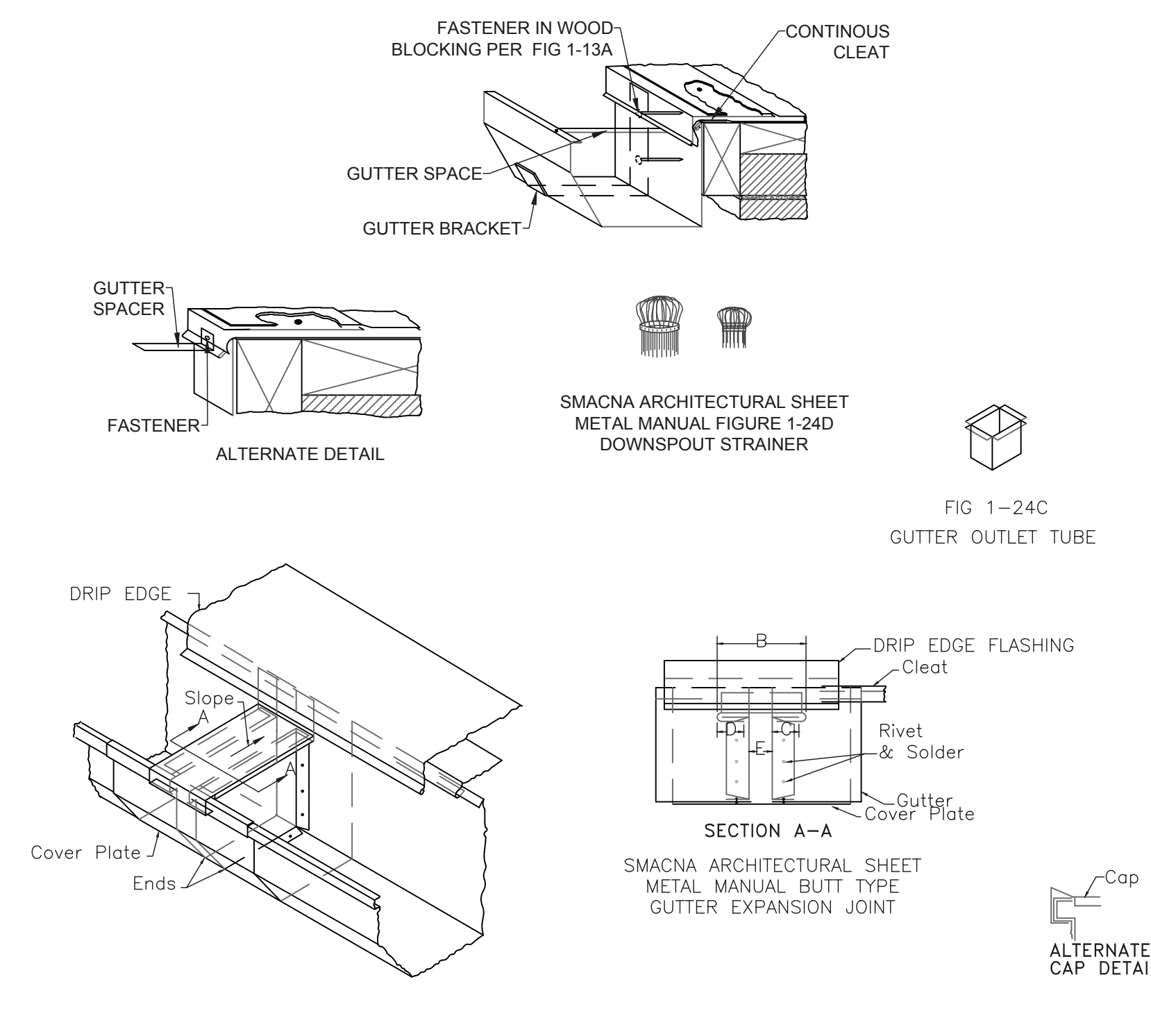


4 TYP. INSULATION FASTENING AND ADHERING PATTERNS DETAIL
SCALE: NTS

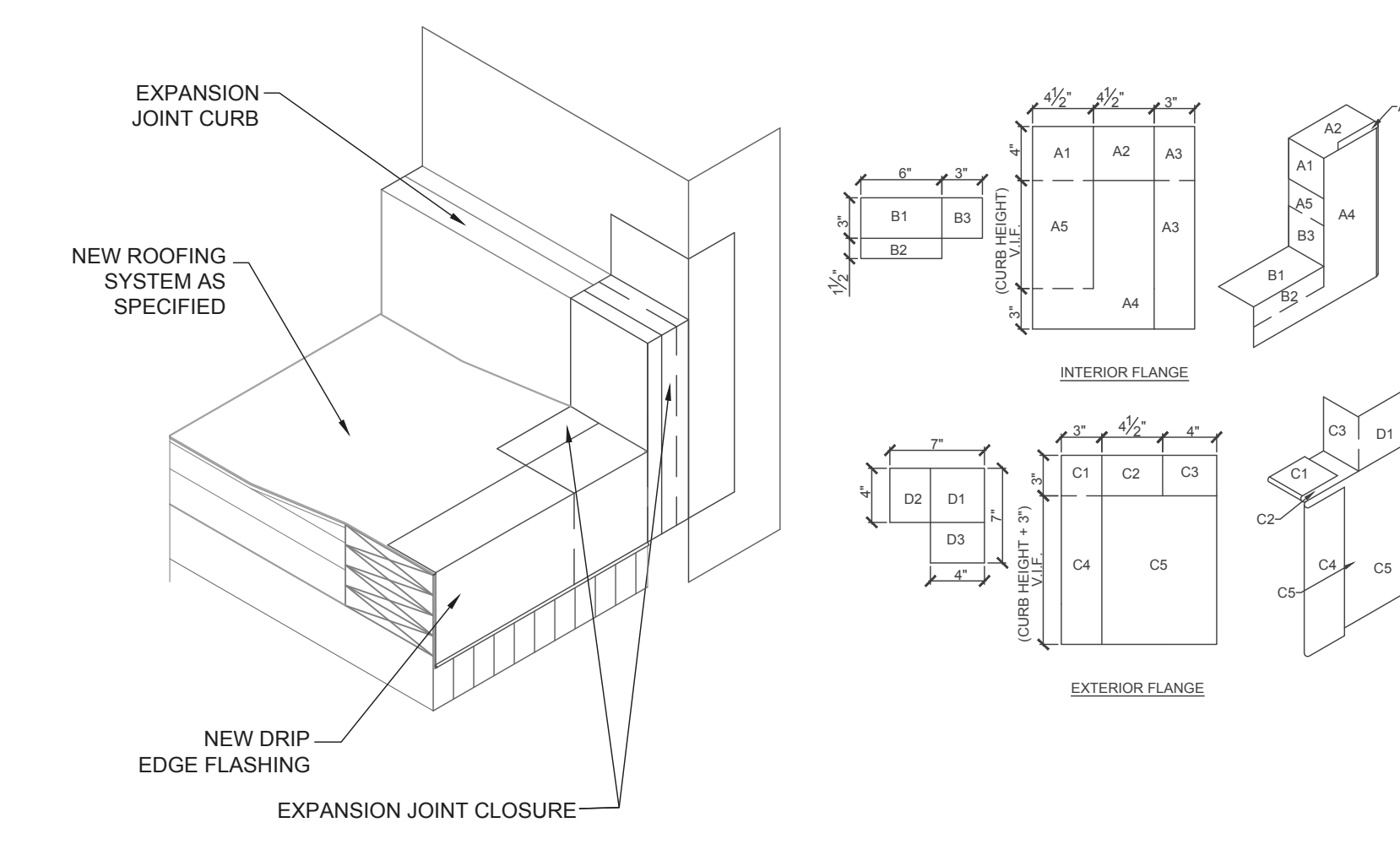
2 TYP. DOWNSPOUT DETAIL
SCALE: 3/4" : 1'-0"

- Notes**
- The following represents minimum adhesive pattern required per Roof Zone for a 4' x 4' isocyanurate insulation board. Adhere to roofing system manufacturer requirements for any given Roof Zone IF adhesive pattern deviates from shown AND roofing system manufacturer adhesive pattern utilizes an equal or more number of adhesive beads. If roofing system manufacturer recommended adhesive pattern utilizes a fewer number of beads for any given Roof Zone, utilize the number of beads and pattern shown.
 - Refer to Specification and/or Structural to determine Roof Zones.
 - Roof Insulation adhesive shall be as specified in the specification.

- Notes**
- The following represents minimum fastening pattern required per Roof Zone for a 4' x 8' thermal barrier. Adhere to roofing system manufacturer requirements for any given Roof Zone IF fastening pattern deviates from shown AND roofing system manufacturer fastening pattern utilizes an equal or more number of fasteners. If roofing system manufacturer recommended fastening pattern utilizes a fewer number of fasteners for any given Roof Zone, utilize the number of fasteners and pattern shown.
 - Refer to Specification and/or Structural to determine Roof Zones.
 - Roof Insulation fastener shall be a minimum #12 fasteners and shall penetrate the top flute of the decking a minimum of 3/4 inches.
 - Roof Insulation plate shall be a minimum 3 inch galvalume plate.



3 GUTTER ACCESSORIES DETAIL
SCALE: NTS



5 EXPANSION JOINT CLOSURE DETAIL
SCALE: NTS