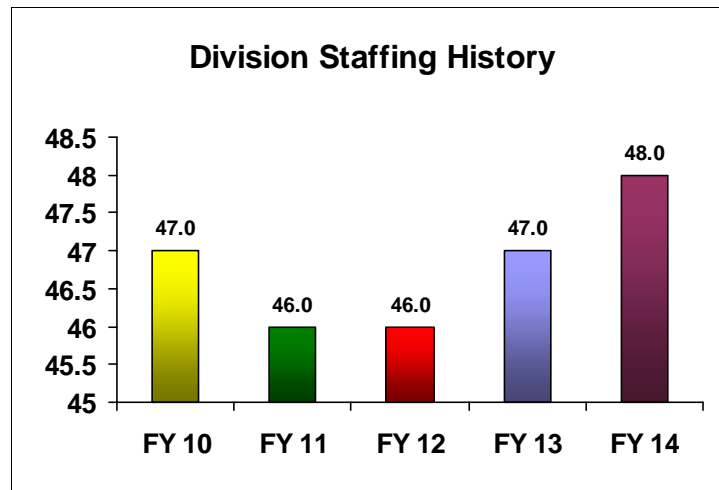


The Division of Safe Schools is committed to maintaining a safe and secure environment for the students and staff of Savannah-Chatham Schools. Comprised of the departments of Campus Police and Student Affairs, this division provides safety, security, student placement, social, counseling, and student registration services. Matters related to the Student Hearing Office are also managed through the Division of Safe Schools. The division is led by the Savannah-Chatham County Public Schools System's Chief of Police.

		FY 2010 Actual	FY 2011 Actual	FY 2012 Actual	FY 2013 Modified Budget	FY 2014 Adopted Budget	%Change FY 2013 to FY 2014
<b>OPERATING EXPENDITURES</b>							
10	Base Salary	1,633,830	1,700,500	1,672,535	1,815,622	1,783,113	-1.8%
11	Other Salary	263,700	379,225	656,588	551,828	578,031	4.7%
<b>Total Salaries</b>		<b>\$1,897,531</b>	<b>\$2,079,725</b>	<b>\$2,329,124</b>	<b>\$2,367,450</b>	<b>\$2,361,144</b>	<b>-0.3%</b>
20	Fringe Benefits	375,189	420,004	476,903	586,778	652,991	11.3%
<b>Total Benefits</b>		<b>\$375,189</b>	<b>\$420,004</b>	<b>\$476,903</b>	<b>\$586,778</b>	<b>\$652,991</b>	<b>11.3%</b>
30	Purchased Services	47,310	50,937	49,281	121,383	54,609	-55.0%
31	Utilities	5,159	3,746	4,703	7,266	6,000	-17.4%
40	Supplies	32,171	64,414	70,976	102,561	129,288	26.1%
50	Equipment	11,854	2,036	6,230	21,669	8,274	-61.8%
51	Vehicles/Buses	57,641	19,246	39,958	0	93,652	N/A
<b>Total Other Operating Expenses</b>		<b>\$154,136</b>	<b>\$140,379</b>	<b>\$171,147</b>	<b>\$252,879</b>	<b>\$291,823</b>	<b>15.4%</b>
<b>TOTAL BUDGET</b>		<b>\$2,426,855</b>	<b>\$2,640,108</b>	<b>\$2,977,174</b>	<b>\$3,207,107</b>	<b>\$3,305,958</b>	<b>3.1%</b>



		FY 2010 Actual	FY 2011 Actual	FY 2012 Actual	FY 2013 Modified Budget	FY 2014 Adopted Budget	%Change FY 2013 to FY 2014
<b>Campus Police</b>							
10	Base Salary	1,633,830	1,700,500	1,672,535	1,815,622	1,783,113	-1.8%
11	Other Salary	263,700	379,225	656,588	551,828	578,031	4.7%
<b>Total Salaries</b>		<b>\$1,897,531</b>	<b>\$2,079,725</b>	<b>\$2,329,124</b>	<b>\$2,367,450</b>	<b>\$2,361,144</b>	<b>-0.3%</b>
20	Fringe Benefits	375,189	420,004	476,903	586,778	652,991	11.3%
<b>Total Benefits</b>		<b>\$375,189</b>	<b>\$420,004</b>	<b>\$476,903</b>	<b>\$586,778</b>	<b>\$652,991</b>	<b>11.3%</b>
30	Purchased Services	47,310	50,937	49,281	121,383	54,609	-55.0%
31	Utilities	5,159	3,746	4,703	7,266	6,000	-17.4%
40	Supplies	32,171	64,414	70,976	102,561	129,288	26.1%
50	Equipment	11,854	2,036	6,230	21,669	8,274	-61.8%
51	Vehicles/Buses	57,641	19,246	39,958	0	93,652	N/A
<b>Total Other Operating Expens</b>		<b>\$154,136</b>	<b>\$140,379</b>	<b>\$171,147</b>	<b>\$252,879</b>	<b>\$291,823</b>	<b>15.4%</b>
<b>TOTAL BUDGET</b>		<b>\$2,426,855</b>	<b>\$2,640,108</b>	<b>\$2,977,174</b>	<b>\$3,207,107</b>	<b>\$3,305,958</b>	<b>3.1%</b>

## *Position Summary*

<i>Position Title</i>	<i>FY 2013</i>	<i>FY 2014</i>	<i>Difference</i>
CAPTAIN-CAMPUS POLICE	1.0	1.0	0.0
CHIEF OF POLICE-SAFE SCHOOLS	1.0	1.0	0.0
CLERK I	1.0	1.0	0.0
CLERK TYPIST-CAMPUS POLICE	1.0	1.0	0.0
COMMUNICATIONS OFFICER-CP	5.0	5.0	0.0
CPL-CROSSING GUARD SUPV	1.0	1.0	0.0
INVESTIGATOR-CAMPUS POLICE	1.0	1.0	0.0
OFFICE MGR	1.0	1.0	0.0
RES OFF-CAMPUS POLICE-260	0.0	10.0	10.0
RES OFFICER-CAMPUS POLICE-229	30.0	21.0	-9.0
SECURITY AIDE	1.0	1.0	0.0
SGT-CAMPUS POLICE	4.0	4.0	0.0
<b><i>Division Total</i></b>	<b><i>47.0</i></b>	<b><i>48.0</i></b>	<b><i>1.0</i></b>