

Board Office

The Board of Education is the elected body which oversees the operations of the School System. It is composed of elected officials from eight districts and a president. The Board of Education sets the system's long-range goals and provides broad policy guidance to the Superintendent on the operations of the system. The Board office, consisting of two full-time staff members, provides administrative support services to the members of the Board of Education in the performance of their elected responsibilities and serves as a liaison between the Administration and Board members.

District Communications

The Communications Department promotes student achievement by enhancing the school system's image, identity, and brand through integrated communications, public engagement, partnership development, and outreach. The department serves as the district's single point of contact for members of the news media. Communications staff members provide timely information to the news media regarding activities of the school system through press releases, media advisories, and other methods, and coordinates requests for information under Georgia's Open Records Act.

Internal Auditor

The Internal Audit Department provides independent internal evaluation and reporting on all functional and instructional areas within the school system. The Internal Audit Department reports to the President of the Board of Education and works with the Audit Committee to establish annual audit plans and issue audit reports. The department also conducts special studies/analyses as requested by the Board President or the Superintendent and approved by the Audit Committee.

Legal - Board Attorney

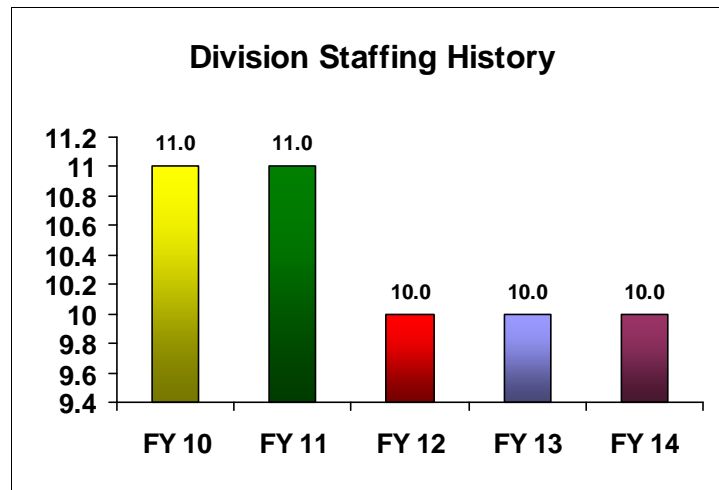
The Board of Education is a multifaceted employer with requirements for legal services in a number of areas, some of which, such as labor relations, are highly specialized. Legal services are provided to the Board on a contractual basis by the firm of Bouhan, Williams, & Levy, with the assistance of Lester B. Johnson, III, P.C.

Office of the Superintendent

The Superintendent's Office supports all educational, financial and administrative activities within the Savannah-Chatham County Public School System. The Superintendent serves as the Chief Executive Officer of the School System.

Executive Management

		FY 2010 Actual	FY 2011 Actual	FY 2012 Actual	FY 2013 Modified Budget	FY 2014 Adopted Budget	%Change FY 2013 to FY 2014
OPERATING EXPENDITURES							
10	Base Salary	772,177	835,397	807,546	770,919	794,669	3.1%
11	Other Salary	116,852	156,233	116,967	164,077	158,827	-3.2%
Total Salaries		\$889,029	\$991,630	\$924,513	\$934,996	\$953,496	2.0%
20	Fringe Benefits	171,376	188,127	197,502	243,246	275,593	13.3%
Total Benefits		\$171,376	\$188,127	\$197,502	\$243,246	\$275,593	13.3%
30	Purchased Services	789,213	871,287	727,340	798,535	800,295	0.2%
31	Utilities	530	559	488	3,219	2,674	-16.9%
40	Supplies	8,644	6,197	10,611	30,986	31,386	1.3%
41	Books	2,105	949	760	2,192	2,192	0.0%
50	Equipment	1,801	2,370	3,503	5,450	7,250	33.0%
Total Other Operating Expenses		\$802,292	\$881,362	\$742,702	\$840,382	\$843,797	0.4%
TOTAL BUDGET		\$1,862,697	\$2,061,119	\$1,864,717	\$2,018,624	\$2,072,886	2.7%



		FY 2010 Actual	FY 2011 Actual	FY 2012 Actual	FY 2013 Modified Budget	FY 2014 Adopted Budget	%Change FY 2013 to FY 2014
Board Office							
10	Base Salary	104,204	106,706	106,706	106,706	111,007	4.0%
11	Other Salary	110,939	112,000	112,150	112,000	112,000	0.0%
Total Salaries		\$215,142	\$218,706	\$218,856	\$218,706	\$223,007	2.0%
20	Fringe Benefits	40,991	42,863	45,238	31,896	37,908	18.8%
Total Benefits		\$40,991	\$42,863	\$45,238	\$31,896	\$37,908	18.8%
30	Purchased Services	81,715	79,390	82,186	107,177	105,917	-1.2%
31	Utilities	530	559	488	2,345	1,800	-23.2%
40	Supplies	2,492	1,643	2,465	17,151	17,151	0.0%
41	Books	306	326	194	692	692	0.0%
Total Other Operating Expens		\$85,042	\$81,919	\$85,332	\$127,365	\$125,560	-1.4%
TOTAL BUDGET		\$341,176	\$343,488	\$349,426	\$377,967	\$386,475	2.3%

Internal Auditor							
10	Base Salary	235,301	245,725	246,685	246,686	256,155	3.8%
11	Other Salary	1,476	0	314	250	0	-100.0%
Total Salaries		\$236,778	\$245,725	\$247,000	\$246,936	\$256,155	3.7%
20	Fringe Benefits	45,580	51,245	55,911	73,735	87,476	18.6%
Total Benefits		\$45,580	\$51,245	\$55,911	\$73,735	\$87,476	18.6%
30	Purchased Services	2,176	4,986	5,551	6,579	4,629	-29.6%
40	Supplies	2,538	1,266	2,691	4,300	4,700	9.3%
41	Books	51	0	0	100	100	0.0%
50	Equipment	0	0	1,888	700	2,500	257.1%
Total Other Operating Expens		\$4,765	\$6,252	\$10,129	\$11,679	\$11,929	2.1%
TOTAL BUDGET		\$287,122	\$303,222	\$313,040	\$332,350	\$355,560	7.0%

Legal - Board Attorney							
11	Other Salary	0	0	234	0	0	N/A
Total Salaries		\$0	\$0	\$234	\$0	\$0	N/A
20	Fringe Benefits	0	0	18	0	0	N/A
Total Benefits		\$0	\$0	\$18	\$0	\$0	N/A
30	Purchased Services	665,838	732,383	604,252	596,000	601,000	0.8%
Total Other Operating Expens		\$665,838	\$732,383	\$604,252	\$596,000	\$601,000	0.8%
TOTAL BUDGET		\$665,838	\$732,383	\$604,503	\$596,000	\$601,000	0.8%

Executive Management

		FY 2010 Actual	FY 2011 Actual	FY 2012 Actual	FY 2013 Modified Budget	FY 2014 Adopted Budget	%Change FY 2013 to FY 2014
Office of the Superintendent							
10	Base Salary	432,672	482,967	454,155	417,527	427,507	2.4%
11	Other Salary	4,437	44,233	4,269	51,827	46,827	-9.6%
Total Salaries		\$437,109	\$527,199	\$458,423	\$469,354	\$474,334	1.1%
20	Fringe Benefits	84,805	94,018	96,334	137,615	150,209	9.2%
Total Benefits		\$84,805	\$94,018	\$96,334	\$137,615	\$150,209	9.2%
30	Purchased Services	39,484	54,527	35,353	88,779	88,749	0.0%
31	Utilities	0	0	0	874	874	0.0%
40	Supplies	3,614	3,288	5,456	9,535	9,535	0.0%
41	Books	1,748	623	566	1,400	1,400	0.0%
50	Equipment	1,801	2,370	1,615	4,750	4,750	0.0%
Total Other Operating Expens		\$46,647	\$60,808	\$42,989	\$105,338	\$105,308	0.0%
TOTAL BUDGET		\$568,561	\$682,026	\$597,747	\$712,307	\$729,851	2.5%

Position Summary

<i>Position Title</i>	<i>FY 2013</i>	<i>FY 2014</i>	<i>Difference</i>
ACADEMIC AUDITOR	1.0	1.0	0.0
ADMIN SECRETARY-SUPT	1.0	1.0	0.0
ASSISTANT SECRETARY-BOARD	1.0	1.0	0.0
CHIEF OF STAFF	1.0	1.0	0.0
SECRETARY TO BOARD OF ED	1.0	1.0	0.0
SECRETARY TO SUPERINTENDENT	1.0	1.0	0.0
SENIOR CLERK-AUDITING	1.0	1.0	0.0
SR DIR-AUDITING	1.0	1.0	0.0
SR. INT AUDITOR	1.0	1.0	0.0
SUPERINTENDENT OF SCHOOLS	1.0	1.0	0.0
<i>Division Total</i>	10.0	10.0	0.0

